



# *The* **Villager**

Issue 9 • 2017

## **WETNOSE DOGGIE WALK**

**ESTATE  
LIVING**

**SENSOPATHIC PLAY**

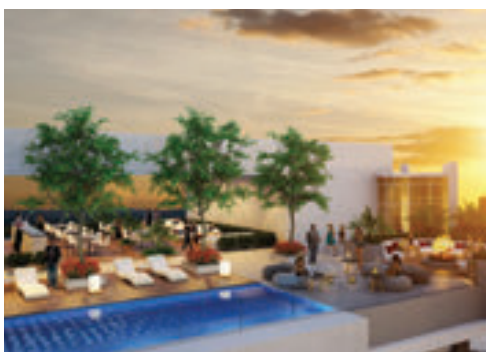


CONSTRUCTION  
COMMENCES  
AUGUST 2017

# MENLYN MAINE

80 % SOLD  
Prime Units  
still available

A lifestyle  
investment



The Trilogy Collection at Menlyn Maine (the first green city in Africa) is one of the most spectacular, vibrant urban residential developments that have entered the Pretoria market in recent years. An excellent investment product, The Trilogy Collection is perfectly poised amongst 5-star hotels, Sun-International's new Gaming facilities, malls, restaurants in the upmarket Central Square and the corporate work place.

Units available from R1 147 560.



Pretoria Luxury Development Team  
060 989 5115  
[developments@pamgolding.co.za](mailto:developments@pamgolding.co.za)  
[pamgolding.co.za/trilogy-collection](http://pamgolding.co.za/trilogy-collection)





# Contents

*The Villager* focuses on Irene Farm Villages. The magazine is delivered to the home of each resident on the Estate. The magazine is co-ordinated and published by Estates in Africa (Pty) Ltd on behalf of the Home Owners' Association of Irene Farm Villages. The opinions of workers and personnel of Estates in Africa (Pty) Ltd do not necessarily reflect those of the HOA of Irene Farm Villages.

#### **Publisher**

Nico Maritz  
E-mail: nico@eiapublishing.co.za

#### **Editor**

Kathy Thersby  
E-mail: kathy@eiapublishing.co.za

#### **Sales Manager & Advertising**

Martin Fourie - Cell: 072 835 8405  
E-mail: martin@eiapublishing.co.za  
Office: 012 997 2712

#### **Sales**

Gerdie Murphy - Cell: 082 556 9863  
E-mail: gerdie@eiapublishing.co.za

#### **Production Co-ordinator**

Chris Grant  
E-mail: chrisg@nowmedia.co.za

#### **Graphic Design**

Diane van Noort  
E-mail: d2vn@mweb.co.za

#### **EIA PUBLISHING OFFICE:**

Tel: 011 327 4062 Fax: 011 327 4094  
32 Fricker Road, Illovo, Johannesburg  
www.eiapublishing.co.za

Deadline for advertisements and editorial contributions:  
15 September 2017.



- 02 Message from the Estate Manager
- 06 Financials
- 08 IFV Sunset Walk and bring & braai
- 11 Khomani Community
- 12 Sensopathic Play
- 14 Estate Living
- 20 Life Talk
- 21 Irene Service Providers
- 22 Smalls
- 23 Approved Estate Agents
- 24 Humour

# woodenways

luxury furniture



012 940 6807 / 012 809 3677



if you love **great style**, you'll love what we do

**Parkview Shopping Centre, Garsfontein Road**

www.woodenways.co.za



At van Niekerk

### Dear Residents

The winter of 2017 was indeed mild and now we are looking forward to a beautiful spring with all the plants showing signs of new life. I sincerely hope that a good 2017/2018 rainy season is on its way.

The 2017 Annual General Meeting ("AGM") took place on the 3rd August 2017 after it was postponed from the 27th July 2017, due to a lack of a quorum. The minutes of the AGM will be circulated to all the Members, once the drafting has been finalised and considered by the incoming HOA Board.

The audited financial statements were presented by Hennie Cronje, the HOA Director of Finance. The following highlights were presented:

- The Auditors issued an unqualified report;
- The HOA is overall in a good financial position;
- The Balance Sheet shows that the HOA's assets exceed R10m;
- Profit for the 2016/2017 financial year was R2,112,383, which includes the sale of the four (4) HOA stands, amounting to R2,817,237;
- The current levy status is set out below;

### How is your total monthly levy calculated?

Levy component	Calculation	Amount
Normal Levy	Example: Size of stand 700m <sup>2</sup> x R1.998	R1 398.60
Special IOP Levy	Total levy approved over 3 years = R7,377m ÷ 654 members ÷ 36 months	R313.34
CSOS Levy	Total monthly normal IFV levies = R992 116 ÷ 654 = R1 517 less R500 x 2%	R20.34
<b>Total Levy</b>		<b>R1 732.28</b>

- The Operational Budget was well managed throughout the financial year with the summary of income and expenditure set out below:

### Summary of our 2017/18 FY Operational Budget

Our Income	Our Expenditure
<u>Normal Levies:</u> R11.9m	Security R5.5m (44%)
<u>Other Income:</u> R616k Special levies, estate agents registration, interest received, contractors' registration	Maintenance R2m (16%)
	Staff Expenses R1.5m (12%)
	CCTV Rental R1.3m (10%)
	Other Expenses R2.2m (18%)
<u>CSOS Levies:</u> R160k	CSOS Membership Fees R160k

- Four (4) capital developments are currently in progress as set out below:

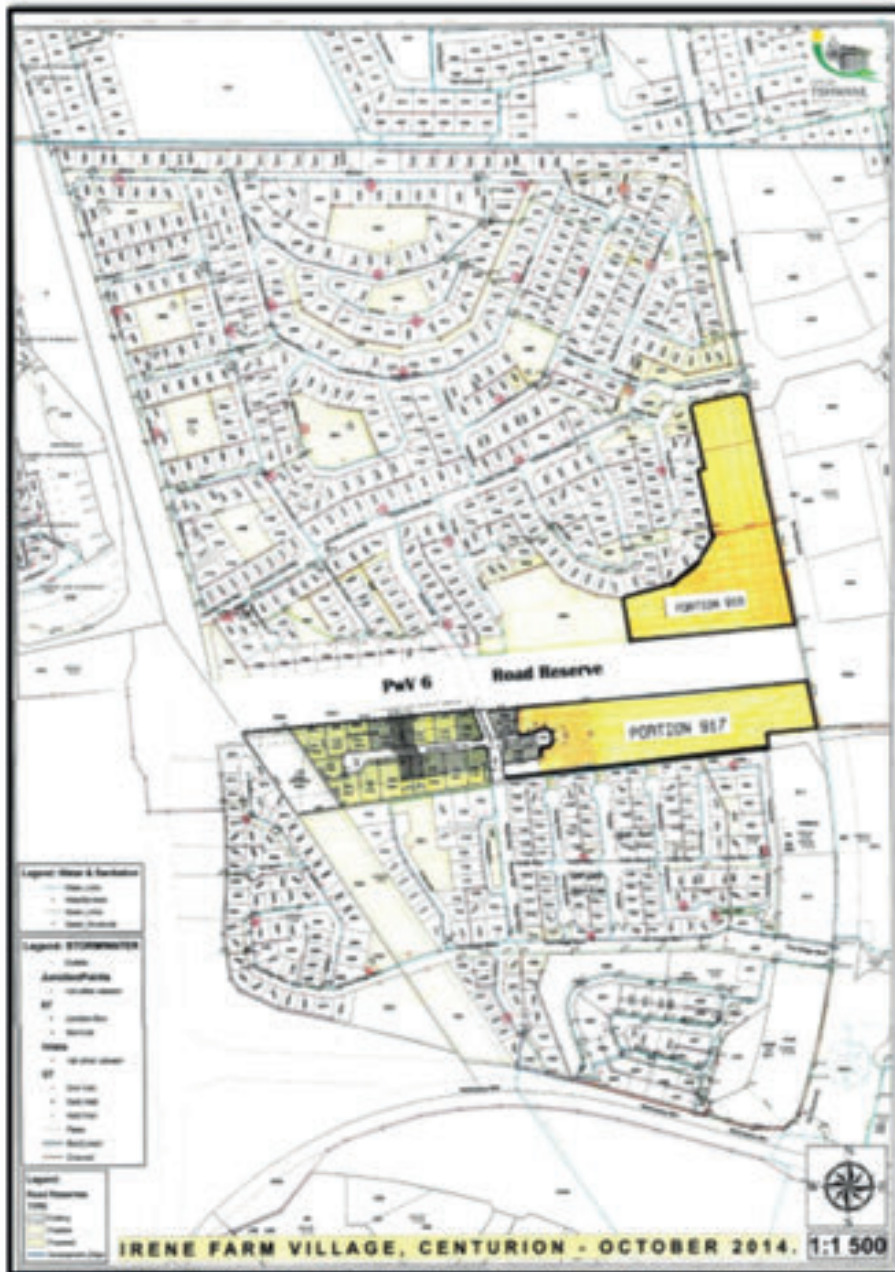
### Summary of our Capital Projects Budget

Our Capex Programme consists of 4 projects and is being implemented over a 3-year period

Project	Description	Cost	Source of Funding
<b>Infrastructure Development Project</b>	Upgrading of the Main Gate, North Gate and Contractors Yard	R10.3m	Cash reserves; Members' special levy
<b>Power Solution Project</b>	Installation of backup power generators and electrical reticulation at both instances	R2m	Cash reserves
<b>CCTV Project</b>	Supporting infrastructure for CCTV cameras, fibre connections This excludes the rental of the CCTV equipment	R762k	Cash reserves; Savings from guarding services
<b>Land Purchase Project</b>	Purchase of the stands known as Portions 916 and 917 (old church stand)	R2.4m	Cash reserves
<b>Total</b>		<b>R15.5m</b>	



- The HOA land purchase from Irene Land Corporation (Pty) Ltd is indicated on the diagram below:



## • Unclaimed Development

**Deposits:** A resolution was passed that after a period and an agreed process followed, the unclaimed deposit will be converted into extraordinary income for the HOA, and the allocation of the deposit towards any unpaid debt owing by the Members to the HOA. It was explained to the Members that although the deposit will be converted to income for the HOA

to be utilised in its operations, the source of the value, amounting to R600,000 plus, will remain in the HOA's records and the deposit refunded should a Member in future claim their deposit.

Apart from the above financial matters, the following resolutions were adopted at the AGM;

- The Architectural Guidelines as set out in the HOA Rule 5.2.4,

are applicable to all additions and alterations to properties in Irene Farm Villages;

- A daily penalty will be imposed, should a Member not comply with the HOA Rule 5.2.13.4, which pertains to garages and garage doors and which includes the correct process to be followed;
- The non-compliance with the HOA Rule 5.2.13.5, which deals with driveways, will now carry a once-off penalty of R5,000 and which also includes the correct process to be followed;
- Carports are now included in the HOA Rule 4.5.4, which deals with temporary structures;
- Members must now in addition to the standing requirements, also submit electronic copies of their building plans to the Estate Management, when applying for the approval of their building plans;
- Gardens not maintained in accordance with the HOA Rule 4.5.1, will now carry a penalty of up to R10,000;
- In accordance with the HOA Rule 4.8.2.4, the HOA will only issue the requested Clearance Certificate if the property complies with the Architectural Guidelines at the time of the sale;

The following Directors were appointed:

- Casper Badenhorst
- Deena Moodley
- Hennie Cronje
- Jaco Oosthuizen
- Mckay Matsebanane
- Tshepo Phiri
- Willem Richter.

The Chairperson, Co-Chairperson and the Directors' portfolios will be appointed at the first Board meeting in September 2017. Feedback will be given in the next issue of The Villager.

The first **Sunset Walk and Bring &**

**Braai** took place on Wednesday, the 9th August 2017. A special word of thanks to the HOA's Community Investment Committee ("CIC"), who arranged the event and to all the Residents who attended the walk and braai.

Our next major event is the **Doggy Walk on Saturday the 9th September at 10h00** in the Village Green Park at the Estate post boxes. This event is sponsored by Pam Golding Properties. All donations will go to the Wet Nose Animal Rescue Centre. Entry forms are available at the Estate Office.

Mr Leon van der Merwe, who had been appointed as the Assistant Estate Manager, resigned on the 1st August 2017.

We would also like to thank all Residents for their indulgence with the Estate Office administration during the absence of Madeleine, who is on her annual leave.

May everyone enjoy a beautiful 2017 spring.

Best regards

*Estate Management*



*Country Living in the City*

## Wetnose Doggie Walk

**SATURDAY  
9 SEPTEMBER 2017  
VILLAGE GREEN AT THE POST BOXES  
10am**

In aid of: 

**Bring along your furry four-legged friends for an organised walk at Irene Farm Villages.**

Entry fee: Large bag of dog food, and or bag of cat food  
Time: 10am  
Closing date for entries: 25 August 2017

Medals for all entrants  
Dog training tips  
Health advice from local vet  
Food and Drink stalls on the day  
Popcorn and Candy floss sponsored by Pam Golding Properties



**I am Irene Farm Villages & Centurion Golf Estate**  
Peter Varrie 082 457 7416, [pamgolding.co.za/peter-varrie](http://pamgolding.co.za/peter-varrie)  
Office: 012 644 8300





Albert Einstein once said:

**“Great spirits have always encountered violent opposition from mediocre minds”**





**HAPPY Spring Day**

**LIESL VAN STADEN**  
(FPRS - Professional Practitioner in Real Estate)  
084 870 1465  
liesl@appleproperty.co.za

**LENIE VISAGÉ**  
(FPRS - Professional Practitioner in Real Estate)  
083 259 5342  
lenie@appleproperty.co.za

Contact us if you want to buy/sell & for free valuations  
www.appleproperty.co.za  
**Apple PROPERTY CONNECTION**  
Your Home Our Core Business



**UNIVERSAL ROOFING**  
WATERPROOFING AND ROOF REPAIRS

**ALL WORK GUARANTEED**

**QUOTES - FREE QUOTES - FREE QUOTES**



**WATERPROOFING**  
Tile Roofs  
Concrete Roofs  
Slate Roofs  
IBR Roofs



**PAINTING**  
Roof Painting  
Interior painting  
Exterior Painting  
Damp Repairs



**ROOF REPAIRS**  
Leaking Roofs  
Sagging Roofs  
Broken Tiles  
Roof Insulation



**SEAMLESS GUTTERS**  
Chromadek Gutters  
Box Gutters  
Facia Boards  
Wide Range Of Colour



**CEILINGS**  
Plastered Ceilings  
Bishop Strip Ceilings  
Timber ceilings  
Suspended Ceilings



**SKYLIGHTS**  
New Skylights  
Repair Skylights  
Waterproofing Skylights  
Laminated Safety Glass

**ROOF**  
Spring A Leak?

**PRETORIA**  
012 653 7227  
012 653 7228

**ROOF**  
Spring A Leak?

**JOHANNESBURG**  
011 708 7474  
011 708 4024

**www.universalroofing.co.za**



**BuySell**  
THE REAL ESTATE COLLECTION

**Residential Sales and Rentals**  
To view all our properties, visit our website:  
**www.buysellsa.co.za**




**Nina**  
082 963 1994  
PRINCIPAL SALES AGENT

**Eunice**  
071 676 5940  
RENTALS

**IRENE FARM VILLAGE**

**SPECTACULAR!! R5.9 mill**

WEB REF: 987



4 bedrooms, 3 bathrooms,  
2 living areas, 2 dining areas,  
enclosed patio, study/gym, pool,  
3 garages and domestic quarters

**NINA 082 963 1994**

**MASTERPIECE – NEW LISTING R5.2 mill**

WEB REF: 1005

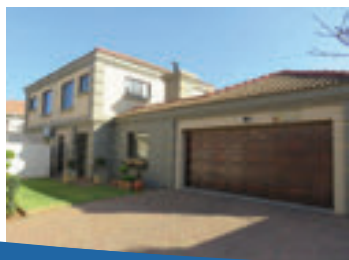


5 bedrooms, 3 bathrooms, open  
plan tv room/ dining, 2 gas  
fireplaces, spacious living area,  
pool, storeroom, 3 garages and  
domestic quarters

**NINA 082 963 1994**

**FAMILY HOME – NEXT TO PARK R3.150 mill**

WEB REF: 1003



4 bedrooms, 2 full bathrooms,  
kitchen with separate scullery,  
lounge, 3 open plan living areas,  
dbl garage, covered patio and  
pool

**NINA 082 963 1994**

**RENTAL R20 000pm**

WEB REF: 1007



OCC 1 SEP OR ASAP  
3 bedrooms, 2 bathrooms,  
kitchen, diningroom, dbl garage,  
curtains included.

**EUNICE 071 676 5940**



## IRENE FARM VILLAGES HOME OWNERS' ASSOCIATION

### Summary Income Statement July 2017

	July 2017		Year to Date		YTD Variance	
	Actual	Budget	Actual	Budget	Value	%
<b>Operational Income</b>						
<i>Levy Income</i>						
Normal Levies	992 116	992 116	4 960 582	4 958 592	1 990	0.0%
<i>Other Income</i>						
Interest Received	53 108	32 000	254 472	175 000	79 472	45.4%
Contractors Permits	150	10 000	93 468	50 000	43 468	86.9%
Estate Agent Registration	0	0	129 960	129 960	0	0.0%
Post Box Annual Fee	500	2 000	38 600	10 000	28 600	286.0%
	1 045 875	1 036 116	5 477 081	5 323 552	153 529	2.9%
<b>Operational Expenditure</b>						
<i>Professional /Administration</i>						
Accounting Fees	34 980	34 980	174 900	174 900	0	0.0%
Audit Fees	0	0	1 425	58 500	57 075	97.6%
Bank Charges	2 688	3 000	17 981	15 000	(2 981)	-19.9%
Insurance	11 692	11 060	57 284	55 300	(1 984)	-3.6%
Legal & Professional Fees	1 300	5 000	44 482	25 000	(19 482)	-77.9%
<i>General Office</i>						
Office Equipment	0	1 200	33 338	5 800	(27 538)	-474.8%
General Expenses	1 552	1 000	5 887	15 000	9 113	60.8%
Office Refreshment	745	1 000	4 926	5 000	74	1.5%
Printing & Stationary	1 034	4 750	9 657	23 750	14 093	59.3%
Telecommunication	6 055	6 150	20 655	30 750	10 095	32.8%
<i>Operational Expenses</i>						
Municipal Charges	167 957	156 879	780 654	799 058	18 404	2.3%
Recycling	47 342	31 000	138 278	155 000	16 722	10.8%
Donations	8 909	8 909	35 637	44 545	8 908	20.0%
Meetings	0	5 000	30 000	25 000	(5 000)	-20.0%
Salaries & Wages	710	500	2 328	3 500	1 172	33.5%
	110 996	111 470	574 411	571 013	(3 398)	-0.6%
<i>Security</i>						
Access Control (ClickOn)	494 995	615 237	2 621 543	3 021 741	400 198	13.2%
- ClickOn Recovery	20 022	22 000	81 659	110 000	28 341	25.8%
Equipment Maintenance SLA	(10 368)	(10 000)	(30 719)	(50 000)	(19 281)	38.6%
Security Maintenance	20 610	41 717	103 051	168 451	65 400	38.8%
CCTV Equipment Rental	8 744	7 000	46 279	35 000	(11 279)	-32.2%
Guarding Services	0	139 950	0	419 850	419 850	100.0%
	455 987	414 570	2 421 274	2 338 440	(82 834)	-3.5%
<i>Repairs &amp; Maintenance</i>						
Fuel	169 122	156 510	783 972	764 240	(19 732)	-2.6%
General Maintenance	3 350	3 000	13 933	15 000	1 067	7.1%
Infrastructure Maintenance	3 155	8 750	41 559	45 350	3 791	8.4%
Park Facing Boundary Walls	3 303	3 140	17 537	15 700	(1 837)	-11.7%
Park Maintenance	23 718	13 750	89 969	68 750	(21 219)	-30.9%
Park Maintenance Contract	0	5 000	6 138	25 000	18 862	75.4%
Vehicles	121 362	121 370	586 201	586 240	39	0.0%
	14 233	1 500	28 636	8 200	(20 436)	-249.2%
	892 119	996 766	4 556 705	4 994 039	437 335	8.8%
<b>Operating Profit / (Loss)</b>	153 755	39 350	920 377	329 513	590 864	





## IRENE FARM VILLAGES HOME OWNERS' ASSOCIATION Summary Income Statement July 2017

	July 2017		Year to Date		YTD Variance	
	Actual	Budget	Actual	Budget	Value	%
<b>Non-Recurring Revenue</b>						
Estate Penalties	2 500	0	35 000	0	35 000	100.0%
Late Building Penalties	87 250	0	87 250	0	87 250	100.0%
Late Payment Penalties	7 350	0	20 325	0	20 325	100.0%
Plan Fee Recovery	8 561	0	36 308	0	36 308	100.0%
- Plan Fee Cost	(6 292)	0	(42 988)	0	(42 988)	100.0%
Expense Recovery	0	0	100	0	100	100.0%
Sale to Members	0	0	0	0	0	100.0%
<b>Non-Recurring Expenses</b>						
Scanning of Building Plans	0	0	25 054	0	(25 054)	100.0%
Traffic Management	0	0	0	120 000	120 000	100.0%
Social Development Projects	0	5 000	0	20 000	20 000	100.0%
Water Tanker Roadworthy	0	0	0	0	0	100.0%
Park Development	0	0	0	60 000	60 000	100.0%
Historic Tshwane Accounts	0	0	0	0	0	100.0%
Environmental Development	0	0	0	0	0	100.0%
Cash Provision	0	0	0	0	0	100.0%
<b>Net Positive/ (Negative)</b>	<b>99 369</b>	<b>(5 000)</b>	<b>110 941</b>	<b>(200 000)</b>	<b>(38 951)</b>	
<b>Net Profit / (Loss)</b>	<b>253 124</b>	<b>34 350</b>	<b>1 031 318</b>	<b>129 513</b>	<b>551 913</b>	
None	0	0	0	0		
CSOS Levies	13 302	0	13 302	0		

Irene Farm Village Home Owners Association - Infrastructure Development						
	Actual	Budget	Actual	Budget	Value	%
<b>Revenue</b>						
Special Levies	203 984	203 984	1 019 922	1 019 920	0	0.0%
Stand Sales			3 756	0	3 756	100.0%
<b>Projects</b>						
WIP - CCTV Project			76 514			
WIP - Infrastructure Development Project			103 007			
WIP - Land Purchase Project			0			
WIP - Power Solution Project			1 152 904			

### Account Ability

Office Address:  
Sovereign Drive,  
Route 21  
Corporate Park

Accounting Office Hours  
8:00 to 13:00  
Monday to Friday

Office Tel:  
082 780 0059

Accounts Email:  
accounts@aams.co.za

IFV Accounts:  
Winny Boshoff



Summary Income  
Statement by  
Account Ability

The 3 Cs of Life:

*choices, chances, changes*

You must make a Choice to take a Chance  
or your life will never Change

# IRENE FARM VILLAGE SUNSET WALK



## Sunset Walk on the 9th August

Arriving at the meeting point and being greeted by so many warm and friendly faces set the tone for an exciting and memorable afternoon. The weather was perfect for a sunset walk as we embarked on our 4km adventure. Having lived in the estate for eleven years, I never expected to learn so much about our beautiful hiking trail in just one hour.

Stories about the rich history of the Estate were shared with the group as we walked. We also learnt about the many plant species such as the mosquito repelling *Lippia javanica* (lemon bush) plant growing along the trail. In addition we discovered the beautiful rock formation called the Lion Rock which really does look like a lion! We are truly fortunate to be able to experience nature like this in our own back yard.

The sunset walk was a wonderful experience appreciated and enjoyed by residents, friends and neighbours of all ages!

Enash Chiba





## AND BRING & BRAAI

The village green was abuzz with activity after the sunset walk on the 9th of August. People arrived with their gas braais, camping chairs and baskets filled with goodies and were soon having a wonderful time chatting to old friends and getting to know some new ones.

The wonderful aroma of meat on various braais and the sound of children playing nearby added to the superb atmosphere that was experienced by residents and friends of all ages. This was the first bring and braai, but hopefully not the last.

It is truly a privilege to call IFV home, a place where we are able to spend time in the "country" while retaining the benefit of easy access to city amenities.







48 Booysens Road, Selby, Johannesburg, 2091

We offer  
short term  
loans against  
all assets on  
wheels



Our SAPS accredited consultants are happy to  
assist you in the comfort of your own home,  
APPLY online today  
[www.goodfellowspawnbrokers.co.za](http://www.goodfellowspawnbrokers.co.za)

Call us today for instant help on:

Toll free number **086 001 5656**

WhatsApp **076 918 7839**

Head office JHB **011 689 9200**

Pretoria **012 534 3203**



# 4<sup>th</sup> Avenue Properties



*Welcome Spring!  
The best time for  
new beginnings,  
is now!*

Christa 083 388 4736 | Nadia 082 971 4658  
[info@4thaveproperties.co.za](mailto:info@4thaveproperties.co.za) | [www.4thaveproperties.co.za](http://www.4thaveproperties.co.za)

Contact us for sales and rentals in Irene Farm Villages  
We also have investment properties available

A STRONGER, FITTER YOU  
IN ONLY 20 MINUTES PER WEEK!



The combination of state of the art EMS  
technology, modern personal training  
methods and rapid (quantifiable) results,  
undoubtedly makes Body20 the most  
exciting training innovation of the  
decade.

**BOOK YOUR  
FREE DEMO  
NOW!**



[irene@body20.co.za](mailto:irene@body20.co.za)  
064 159 7480





## Irene Farm Villagers care for the community

In recent years, our residents have been instrumental in improving the lives of almost 800 #Khomani San Community members that live in extreme poverty in Andriesvale in the Northern Cape. Andriesvale is a settlement in the Kalahari located about 200km north of Upington on the way to the Kgalagadi National park. This initiative is supported by the IFV Community Investment Committee.

Since 2006, annual, and sometimes bi-annual, outreaches by a group of volunteers to this community have been taking place. Since 2014, the residents of IFV have been donating clothing and other items which alleviate the plight of the #Khomani San.

It is very encouraging to see a marked improvement in the welfare of the San people at Andriesvale since the inception of the Outreach.

The outreach is close to the hearts of residents in IFV and various families in our Estate have joined the outreach team on the annual excursions to Andriesvale. The group of volunteers are always received with great enthusiasm and those arriving in Andriesvale as strangers leave as friends of these humble people who have so few possessions but have so much to give of themselves.

We urge you to donate any clothing that you no longer use to this worthy cause. Each person in the community receives a parcel of clothing that is packed specifically for them. The age, size and gender are taken into consideration when we pack these items. For smaller children we often pack a soft toy into the parcel. Books and other small household items are also



included in the boxes. Clothing parcels are packed for each of the #Khomani families and delivered to their home or collected by them at the community hall. There are approximately 800 community members in the 220 family groups.

You can contribute to this worthy cause by placing your unneeded clothing in the green bins at the gates.

Should you wish to join the outreach during the school holidays in October 2017, please contact Marthinus at 084 555 2489 or Gail at 083 651 1957 for more information.



# SENSOPATHIC PLAY – more valuable than parents realise



**“Screens don’t provide three-dimensional learning.”**

In a fast-moving digital world, where children are glued to the couch with a handheld device in-hand, it is important to give them an opportunity to experience the world through touch - a fun and engaging way to play and learn with endless developmental benefits.

Parenting expert Nikki Bush says sensopathic play uses the sense of touch, the biggest sensory system in the body to help children better understand the world around them.

“Sensopathic play is a very real, concrete and experiential way to learn through personal experience. And as Albert Einstein said: ‘Learning is experience. Everything else is just information’,” Bush says.

Yet, in the modern world fewer children engage in sensopathic play, and instead spend more time in front of a laptop computer or playing video games. Bush says the digital world has evolved so much that these days real toys and games have even been replaced with similar screen-based games.



“Screens don’t provide three-dimensional learning. And these days a 4-year old can play a shape matching game on a tablet, but can’t do it in the real world. Similarly, a 5-year old can build a 64-piece puzzle on a computer game, but struggles to build a puzzle in class,” she says.

Parents are advised to encourage this type of play, and Bush says the options are endless. Drawing on a child’s back with bubble bath during bath time; allowing him/her to draw pictures on the patio door and window with shaving cream, and crafting little figures out of play dough are just a few examples that guarantee fun,

interactive multisensory experiences. And there are many developmental benefits attached to each, including fine motor coordination and teaching a child how to feel emotionally safe and secure.

“Balance children’s time on screens with even more time doing real activities in real time with real objects and real people and you’ll be surprised at the results,” she says.

There are dozens of toys on the market that encourage sensopathic play and the Child Development Team at Toy Kingdom has carefully selected and curated a range of toys that encourage this form of play, including finger paints and play dough, as well as dolls and plush toys.

“Every child needs an opportunity to experience the world in a very real sense and through the sense of touch. By ignoring sensopathic play, your child will not learn as effectively as when they are fully, physically engaged in their own learning creating meaningful experiences,” Bush says.





[www.irenefarm.co.za](http://www.irenefarm.co.za)  
 CASHLESS ENVIRONMENT

# CELEBRATIONS & YEAR-END PARTIES

Celebrations are a wonderful way to get your nearest and dearest together in a relaxed, beautiful setting to enjoy the time together.

It's not often that we get to take time out of our busy schedules to enjoy one another's company so when there's a celebration to be had, why not make it extra special?

We love to celebrate life occasions with our guests so whether it's a stork tea, kitchen tea, birthday party or engagement, Irene Dairy Farm has various offerings for your special occasion.

At the Irene Dairy Farm the little ones can experience a full working dairy farm, from viewing the cows being milked to playing driver on the old red tractor. You can relax and enjoy our well known scones and cream while the little ones play and enjoy one of our jungle gyms.



Have you booked your year-end functions yet?

We offer a wide variety of venues and menus from relaxed Christmas Themed Year-End options to traditional Braai Menus, enquire now!

**Irene Farm Contact Details:**  
**Tel: 012 667 4822**  
**Email: [barn@ireneestate.co.za](mailto:barn@ireneestate.co.za)**

*Hey Kids under 12, this one's for you!*

Ask your mom or dad to take a selfie with you visiting our awesome farm and post it to one of our social media pages.

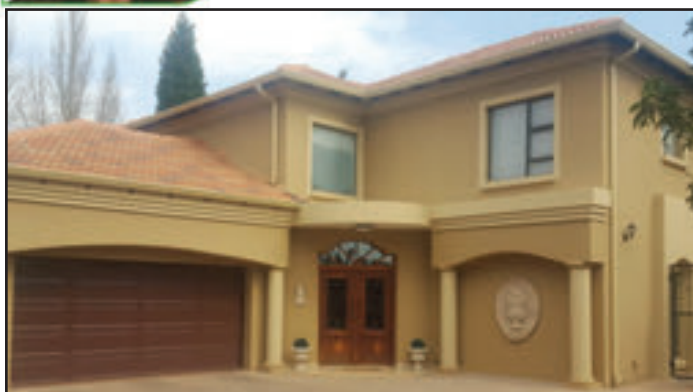


Competition ends: 30 September | Terms and Conditions Apply | Tel: +27 (0) 12 667 4822



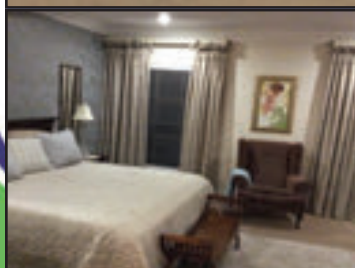
**"YOUR TRUSTED PROPERTY PROFESSIONAL"**

Léane Graaff Properties



**NEW LISTING**  
**Sole & Exclusive Mandate**

**R4,495 mil**



Immaculate Family home – 4 bedroom, 4 L/A, SQ, French kitchen, Study with built in cabinetry, 3 en suite bathrooms and guest bathroom, ample parking. A must view! Owners are relocating.

**UNDER OFFER**

**R2,9 mil**



**RENTAL**

Available 1st October 2017

**R30k per month**



Modern, 4 bedroom house with downstairs en-suite bedroom, brand new modern kitchen, SQ, 3 garages, Fireplace and large stand with pool. Stunning, private and neat home.



# Revolutions come in cycles

Somebody mentioned the other day that cycling – recreational cycling – is overtaking golf as an outdoor pursuit in South Africa. What is helping stimulate the trend is the rapid growth of “secure estates” – controlled access housing complexes where a major attraction is open space and safe places to walk or cycle.



If ever you want to see an example of the popularity of recreational cycling just go to Northern Farm on a weekend – that area of dams in northern Sandton that purifies water from Johannesburg’s sewage works. It’s where cyclists gather – old and young, male and female.

Year after year, and worldwide, the appeal of the ordinary “push bike” is increasing. Bikes are now recognised as a most pleasant way of exercising and, like golf but far cheaper, cycling, as opposed to working out in a gym, provides something interesting and mentally

stimulating to do while exercising.

Cycling is the one form of wheeled transport that cannot in any way be regarded as offensive – no pollution, no noise, little demand on road space. As for enjoying the outdoors, cyclists are able to enjoy the aromas and sounds of the countryside far, far more than those travelling in a car who, literally, suffer sensory deprivation. Cycling has an advantage even over hiking: the scenery changes at a more stimulating pace, yet not so fast that one does not have time to savour it.

The bicycle itself is a marvellous machine when one considers how it runs on fuel such as bananas, bread and jam, beer, even duckling bigrade. The nice thing about this is





that the cyclist has to consume it all first because he or she is the bike's engine and their stomachs are the fuel tanks.

I believe the chain-driven bicycle, a machine that is not much older than a century, is on the edge of a golden age. Europe's cobweb of dedicated cycle tracks – cross country and urban – is growing by hundreds of kilometres a year. Switzerland has 6 000km of them; in the UK nobody is more than 3km from a cycle way. Wherever we went in France or Spain we were able to cycle for hours on "greenways" – disused railway tracks now tarred for cyclists, hikers and roller-bladers.

A decade ago there were an estimated 1 billion bikes in the world.

Today there's that many in China alone – and, what is most interesting, is that a third of Beijing's bikes are battery-driven "ebikes". The ebike offers a new dimension to cycling and represents its most revolutionary change since the chain drive. Bosch in Germany is now producing more than 1 million ebikes a year.

The growing popularity of cycling – especially ebikes – is going to call for far more consideration for cyclists in town and regional planning in South Africa. I think its rivalry with golf is likely to cause golfing estates to include cycling circuits when designing golf courses.

It is going to be interesting to see how cycling's growing popularity will influence tourism. The ebike is becoming the great equaliser in that wives and children can now keep up with daddy on tours and, as cycle tracks proliferate, especially in suburban areas, women may even take to using bikes when socialising.

Little more than a century cycling provided a major step towards the emancipation of women. As women took to it, it spelt the end of neurotic Victorian modesty; the end of ankle-length dresses, corsets and petticoats. These were replaced by skirts and bloomers and all over Europe women were suddenly revealing their legs, causing men to walk into lampposts and into each other.

The advent of the mass-produced cycle also influenced human evolution. Being cheaper to buy and cheaper to keep than a horse, towards the end of the 19th century it enabled more and more young men living in villages to court girls in



distant villages, thus giving a wider choice of mate and resulting in a more widespread and therefore richer human gene pool.

But battery-driven pedal bikes have ushered in a new age.

I belong to a group of six retired colleagues who, for many years, starting from 2002, annually cycled for up to two weeks exploring Europe as well as South Africa. Our average age was 68 and none of us had cycled since childhood but, in 2002, we made a decision: we would cycle down the Danube from Passau in Germany to Budapest.

Now, 16 years later, some of us still cycle long-distances. In moments of introspection, I suppose we were, sub-consciously, attempting to push back the frontiers of medical science and prove that age is no longer relevant; that age really is in the mind? Ok, it's in the joints too but we have anti-inflammatories for that.

Look at our line-up: One of us had a chronic spine injury, two were suffering from old rugby injuries; one had a damaged lung; two had crock knees ... We all had arthritis somewhere or another. When we walked together into, say, a restaurant, the creaking and clicking of worn-down joints startled diners.

One year we even cycled in

**Cycling is the one form of wheeled transport that cannot in any way be regarded as offensive – no pollution, no noise, little demand on road space**



Switzerland. And here I realised how the ebike is going to create a whole new dimension to cycling.

I rode my first one outside Zurich where we hired bikes (we always hire bikes when overseas). I was a little embarrassed at hiring one especially as our oldest member was 80 and insisted on a standard bike.

I pedalled off in the normal way and then reached a ramp which normally would demand engaging a lower gear. I simply twisted the right-hand grip – one must continue pedalling – and it was as if a hand was pushing me from behind.

Back in South Africa I had my R2 500 road bike retrofitted (for R7 000) with a special front wheel whose hub, somewhat larger than an ordinary hub but still unobtrusive, contained a powerful little battery-driven motor. The battery itself fits against the frame like a water bottle so one's bike, to a casual observer, looks perfectly normal.

The battery and silent motor has a 35km range. It can be recharged overnight from a wall plug. The range is ample for a day's cycling because one uses the motor only on hills. If the battery does run out, the cyclist can carry on, but one has to pedal, unlike what happens when an electric vehicle runs out of juice.

Did I feel shame at using a performance-enhancing aid? No. I felt exhilaration. For the first time I was able to keep up with the front-runners on steep hills instead of watching them drawing further and further away.

Better still, I could even leave them behind!

*To convert a road bike to an e-bike costs R11 000, which includes the battery and charger. A useful website is [www.relectro.co.za](http://www.relectro.co.za).*





Flowing lines and an unhesitant TwinPower Turbo engine makes the BMW 318i the perfect car for those who demand definitive performance and athletic style. This unique offer gives you a selection of M Sport package equipment options. Take advantage of a deal that's as competitive as the car and book a test-drive today.

#### BMW SELECT. DYNAMIC FINANCE FOR ULTIMATE CONTROL.

There are countless ways to tailor your payment plan through BMW Select. This is just one example:

Model price	Deposit	No. of instalments
R554 300	10%	36
Interest rate	GFV	Total cost
4.30% linked	R342 000	R262 794

#### Leo Haese Centurion

1402 Hendrik Verwoerd Drive, Centurion  
Tel. 012 683 4000  
[www.bmw-leohaesecenturion.co.za](http://www.bmw-leohaesecenturion.co.za)

BMW Select offer available through BMW Financial Services (South Africa) (Pty) Ltd., an Authorised Financial Services and Registered Credit Provider NCRCP2341. Total cost includes initiation fee and monthly service fees (R68.40 p/m) and excludes licence and registration. Residual may apply subject to deal structure. Offer valid until 30 September 2017 and subject to stock availability. Rate may vary if price differs from the example displayed in this advert. Not available in conjunction with any other BMW 3 Series offer. Model shown with optional extras not included in pricing. Terms & conditions apply.



Sheer  
Driving Pleasure

# DRIVE HOME YOUR ADVANTAGE.

DRIVE THE BMW 318i M SPORT AUTOMATIC FROM R5 699 P/M,  
OR TAILOR YOUR OWN PLAN WITH BMW SELECT.

BMW Financial Services



Giselle — Sales Agent & Rent  
082 346 8640



Machel — Principal Sales & Rent  
082 789 7888

# RM REALTORS

PROPERTY BUYING • SELLING • RENTALS • DEVELOPMENT LAND AND COMMERCIAL



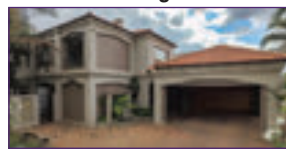
#### Cornwall Hill Estate | Ref: RMRS-1258 (R10 Mil)



4 bed house and 2 bedroom Cottage • Open plan lounge and kitchen • Breakfast room • Scullery • Dining room • Office • Three single and one double garage • Heated swimming pool

Call Machel: 082 789 7888

#### Irene Farm Village | RMRS-1227 R R 4,400,000.00 Dual Mandate



4 Bedrooms • 2 Bathrooms • 2 Garages • 2 Covered Parking • Balcony • Built-in Cupboards • Built-in-Braai • 1 Dining Area

Call Machel: 082 789 7888

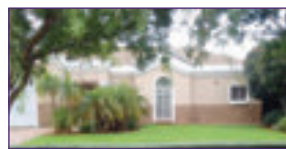
#### Irene Farm Village | Ref: RMRS-1230 R 3 495 000



4 spacious bedrooms, ( 1 Bed , 1 Bathroom downstairs ) and 3 upstairs • 3 bathrooms • Guest toilet • Dining room • TV room • Lounge, fireplace • Study • Patio with built in braai, Garden • 2 Garage.

Call Machel: 082 789 7888

#### Ref: RMRS-1130 R2 850 000



With 3 wondrous bedrooms and 2 bathrooms and central air-conditioning • 2 garages with access to into the house • Beautiful garden • Patio • Luxurious lounge area and dining area and a lovely kitchen.

**SOLD by Giselle RM REALTORS**

#### Irene Farm Village | Ref: RMRS-1252 R3 690 000 Dual Mandate



3 Bedroom • 2 bathroom • 2 Garage • Lounge • Dining Room • Family room • Enclosed patio with glass doors open onto a sparkling pool and garden.

Call Giselle: 082 346 8640

#### TO LET

4 bedroom House  
Irene Farm Villages

**R 29 000**  
• 4 Bedrooms  
• 2 Bathrooms  
Ref: RMRS-0953

4 bedroom House  
Irene Farm Villages

**R 26 500**  
• 4 Bedrooms  
• 3 Bathrooms  
Ref: RMRS-1228

3 bedroom House to  
let in Cornwall Hill

**R 22 000**  
• 3 Bedrooms  
• 2 Bathrooms  
Ref: RMRS-0988

3 bedroom House  
Irene Farm Villages

**R 20 000**  
• 3 Bedrooms  
• 2 Bathrooms  
Ref: RMRS-1189



# SPEC-TACULAR.

DRIVE A SPECCED MINI COOPER S 5 DOOR HATCH FOR R5 999 P/M.

We have a limited number of differently specced MINI Cooper S 5 Door Hatch models in our showroom. Each one is selling at the same price of just R5 999 P/M with a 10% deposit.

Which means the quicker you come in, the better your chance of getting the MINI you've always wanted.

There are countless ways to tailor your plan through MINI Select. This is just one of them.

Model price	Deposit	No. of instalments	Interest rate	GFV	Total cost
R450 626	10.00%	57	8.63% linked	R202 500	R381 111

Visit [www.MINISelect.co.za](http://www.MINISelect.co.za) to view this offer.

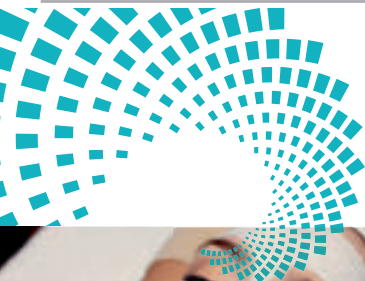
## Leo Haese Centurion

1402 Hendrik Verwoerd Drive, Centurion  
Tel. 012 683 4000  
[www.MINI-leohaesecenturion.co.za](http://www.MINI-leohaesecenturion.co.za)

**MINI SELECT.**  
YOUR MINI. YOUR WAY.



Offer available through MINI Financial Services, whose operating entity is BMW Financial Services (South Africa) (Pty) Ltd., an Authorised Financial Services & Registered Credit Provider NCRCP2341. Total cost includes an initiation fee and monthly service fee (R68.40 p/m) and excludes licence and registration. Residual may apply subject to deal structure. Linked to current Prime Rate. Above offer is calculated based on 57 instalments and a 96 000 km contract limit. Valid until 30 September 2017 and subject to stock availability. Rate may vary if price differs from the example displayed in this advert. Not available in conjunction with any other MINI Cooper S 5 Door Hatch offer. Model shown with optional extras not included in pricing. Terms and conditions apply.



BOOK NOW!



## CAMDEBOO DAY SPA

The haven to relax and revive the senses. Just when it didn't seem possible to find a more relaxing setting than the Lodge, we built our own spa. Camdeboo Day Spa is an oasis of tranquillity that will relax you so thoroughly that you're likely to forget the world exists outside of its walls.

## MEADOW GREEN RESTAURANT

Offers the ultimate in intimate fine dining experiences. With offerings ranging from our famous Breakfast Buffet, to our Saturday Night Live experience whereby the food is prepared at our central cooking station where the Chef prepares the delicacies, A la Minute.





# Teaching Children Work Ethic

**Work ethic – a seemingly small concept that is actually at the core of who we are. To understand why it is so central to our lives, we need to understand what work ethic is and how it can impact on us.**

It encompasses our attitude towards our work; our sense of responsibility; how we communicate, sometimes unconsciously through our actions; our respect and consideration for the environment we are in and the people we interact with; the pride we take in what we do and it tells a story about who we really are. Importantly, your work ethic can impact on others around you – it can either inspire them or it can place an unfair load on them if you don't contribute as and when you should. It can take down a team once it starts to affect the group dynamic; and it can be the difference between succeeding and failing.

Knowing how important it is, and the competitive, every-changing world our children are heading in to, this is a life skill we should instil, in a fun way, from the start. Starting young means, not only are they more willing and keen but, by the time they go to school, their work ethic will be a habit, part of who they are and therefore, effortless to apply.

## Tip #1: Role modelling

In many of our articles, this comes up but, it's a fact – small children learn so much from observing their parents – their words, their actions, their reactions. If they see their parents work hard, honour their responsibilities, finish what they start, take pride in what they do; chances are they will do the same. This incidental learning is invaluable.

## Tip #2: It must be fun!

We want our children to embrace and accept work as part of life and attitude is more than half the battle won. If they perceive it as fun and light-hearted, they will be far more willing to participate and

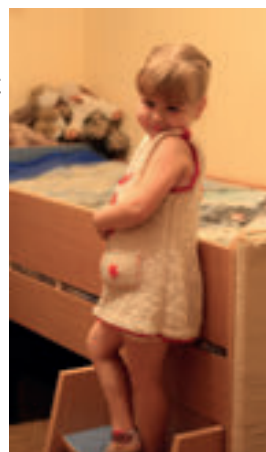


it will keep them engaged. A positive attitude is a fantastic attribute and that, along with a great work ethic, can compensate for what may be lacking in intellectual capabilities.

## Tip #3: It must be a very important job!

For us, chores may seem like work but, for small children they perceive it very differently. When you entrust them with an important task, you are making them feel special – and that makes them feel good about

themselves. This builds self-belief. Remember, they want to please you more than anything. These positive feelings will help them embrace the concept of work. Looking after pets is a great way to make them feel extra special.



## Tip #4: Age-appropriate chores

Avoid frustrating them, and yourself, by giving them an appropriate everyday task to do.

For a toddler, introduce one chore at a time and explain what they need to do and how often. Make sure they are simple, fun tasks and don't forget to praise them for their efforts. It may need practise and repetition until they get the hang of it. These could include:

- Brushing their teeth, which they must

proudly display to you afterwards for inspection.

- Getting dressed by themselves.
- Putting their dirty clothes in the wash.
- Helping to tidy up a room or put their toys away.
- Help water the plants with a small watering can.



For slightly older preschoolers, they can do more complex task and you can make it their set responsibility.

- Setting the table, and clearing it again after the meal.
- Packing the dishwasher.
- Feeding the pets.
- Packing their own clean washing away.
- Making their beds.

As they grow, be mindful to continue with this process, adding more complex chores. Each member of the family should have something they are responsible for – both in terms of remembering to do it and actually doing it. It shouldn't be your job to keep reminding them – that's part of the learning. Doing chores together should also be considered – this teaches team work and joint responsibility.

## Tip #5: Show appreciation and praise efforts

Show appreciation for their efforts. When they have completed a picture they were drawing, or built a sand castle, or remembered to do their chore – positive reinforcement goes along way. When they are younger – praise will be very important to them – this is how they understand that they are doing well and making you proud. Remind them too, that they can be proud of themselves for doing such a



good job. This helps to develop their self-esteem. And it doesn't always have to be about total success, improvements are also worthy of praise. Be cautious to not over-praise, this can build a false sense of achievement so there always needs to be balance.

## Tip #6: Teach perseverance

In order to be successful, regardless of your personal interpretation of the concept, you have to go through a process – to learn to persevere, to fail, to have marginal success, to have great results. This builds resilience and confidence and shows you where your strengths and weaknesses are. Teach your children, to take this approach in everything they do in life.

Setting achievable goals is one way to do this. Always having something to work towards is very inspiring. You could pay them pocket money for certain chores, or have a reward

system for good behaviour or chores done on time. This teaches them responsibility and discipline which all forms part of their work ethic as they grow older.

When they are little, something as simple as building a puzzle can also develop this skill. With the puzzle you need to plan how to build it, sort pieces, you may make mistakes which you only realize later on and have to correct and rebuild, it can take time and you may want to give up but, when it is done, you have a beautiful puzzle to show off and be proud of.

A strong work ethic will benefit your children for the rest of their lives. Invest the time and energy when they are young – and you will reap the rewards as they grow. Giving enabling skills to our children, to allow them to lead happy lives, where they are able to cope and achieve, must be a gift worth giving to our children. It can mean the difference between them being ordinary to extraordinary.

Other sources:  
<http://www.wikihow.com/Teach-Your-Kids-to-Have-a-Work-Ethic>  
<http://www.bhg.com/health-family/parenting-skills/responsible-kids/teach-your-kids-work-ethic/>

## About Life Talk® Forum

*Our mission is to create happy, successful and fulfilled youth, guided by sound values. Life Talk is a non-profit organization dedicated to raising awareness, stimulating discussions and seeking solutions to the challenges faced by parents and their children. For more important parenting tips & information visit [www.lifetalk.co.za](http://www.lifetalk.co.za) or email [Forum@lifetalk.co.za](mailto:Forum@lifetalk.co.za)*





## MEDICAL SERVICES

### DENTAL CARE

Irene Village Care, General dentistry and more. Irene Village Mall.  
Call: 012 662 0302 / 079 069 4607  
info@irenecare.co.za  
www.irenecaredentist.co.za

### DR CHRISTA ROCHER

Your GP in Irene Village Mall  
Family Health, Child Health, Women's Health  
Call: 012 662 0305  
Info@christacare.co.za  
www.christacare.co.za

### PHARMACY

Rynepark Pharmacy Beauty salon, stockist of Environ, clinic services, baby clinic, Discovery Vitality checks  
012 662 1705

### QUALIFIED IRIDOLOGIST / LIVE BLOOD ANALYSIS

Achieve optimal health by identifying your hidden imbalances.  
Contact Willemien du Toit  
082 789 3929  
dutoitwillemien@gmail.com  
www.lumeniq.co.za Irene, Pretoria

## FINANCIAL SERVICES

### FINANCIAL PLANNING

Professional Advice on all Personal and Business related Insurance needs.  
Personal: Medical Aid, Funeral , Life Cover, Short Term Insurance, Investments  
Business: Group Benefits , Company Agreements, Business Contingency, Commercial Insurance  
Contact Us: riaan@netactive.co.za / hilda.muller@netactive.co.za  
084 653 6299 / 083 6536299 / 012 348 1239  
Office Hours : 8H00 – 16H00

## TRANSPORT SERVICES

### COLETTE DIRKS AIRPORT SHUTTLE SERVICE AND TRANSPORT TO AND FROM ST ALBAN'S COLLEGE.

Bus will leave from main gate at 6:30. Pick up from St Alban's in the afternoon.  
Contact Colette at 082 415 3830

## GENERAL SERVICES

### EVENTS & DÉCOR

Unlimited Events Décor  
Décor, sound & lighting, balloons, photography, treat & eats  
012 664 1114

### LITTLE EINSTEIN'S PLAYSCHOOL:

Beautiful environment with exceptional educational resources. Highly qualified educators and an outstanding grade 0 year. Grade 000 to 0. Sharon 082 904 8157 or 012 667 5524

### LOOKING FOR A PHOTOGRAPHER?

See my portfolio here at [www.ivanmullerphotography.com](http://www.ivanmullerphotography.com). If you like what you see, contact Ivan at 082 454 8487 or [ivanmuller@icon.co.za](mailto:ivanmuller@icon.co.za). I also have a large format photo quality inkjet printer that can print on canvas and fine art paper up to size A0. My studio is at 579 Broadbury Circle, Cornwall Hill Estate. I am also available for any type of location photography.

## HOME SERVICES, BUILDING & MAINTENANCE

### BOTSELO'S CURTAIN BOUTIQUE

012 663 8091. We offer a professional service from Blinds & Curtains to Rods, Shutters, wallpaper, etc. With a wide variety of fabrics and styles available, we will find the perfect colour, style and design to meet your specific needs. Come visit our showroom or contact us to experience the full spectrum of services on offer.  
All your decorating needs under one roof, from consultation to installation  
Email: [botselos@botselos.co.za](mailto:botselos@botselos.co.za).

### CREATIVE WOODWORKS- WOODEN DOORS & WINDOW FRAMES

Maintenance and Restoration, General Installations and Custom Joinery. Please Contact Kobus Langeveldt 079 632 5331 or 074 615 8579  
[www.creativewoodworks.co.za](http://www.creativewoodworks.co.za)

## HOME SERVICES, BUILDING & MAINTENANCE

### CHEMDRY

Convenient appointments, deep cleaning on carpets & upholstery.  
Chantel 012 663 8531 / 082 372 4999

### HASSLE-FREE POOL SERVICES

Weekly pool maintenance for R 500 including chemicals. Contact Mark Venter at 082 601 6868 or e-mail me at [markventer67@gmail.com](mailto:markventer67@gmail.com)

### PLUMBING – PLUMB AVID

Drains, leaks, maintenance, installations. 012 654 2513

## GARDENING AND LANDSCAPING

### GRASSYNER KLINIEK/ LAWNMOWER CLINIC PRETORIA

Sales accessories, parts & repairs on mowers, lawn tractors, brushshutters, Pressure washers, vacuum cleaners, chainsaws and more. Best Brands, amazing service. Top Deals every time! Tel 012-323-1833  
[www.lawnmowerclinic.co.za](http://www.lawnmowerclinic.co.za)

### LIFESTYLE HOME GARDEN

Indegenous and exotic plants, home decor and restaurants. 011 792 5616  
Madison Flowers  
Fresh floral arrangements.  
012 667 1802 / 082 873 3797

### MELIA GARDENS

Would you like to have a beautiful garden? Our professional, reliable garden service company can assist you. We have over 16 years' experience and also offer pool maintenance services. Contact us for a quotation and see how we can maintain your garden and make it flourish!  
Amelia - 083 326 4210  
[gardenlady@mweb.co.za](mailto:gardenlady@mweb.co.za)

### MONAVONI NURSERY

Landscaping, irrigation, nursery.  
012 668 1261

## RESTAURANTS

### MEADOW GREEN RESTAURANT.

012-667-6464.

## DOMESTICS

Reliable mature Afrikaans speaking domestic looking for full time work with live in accommodation. She is reliable and trustworthy. Her contact details: Eva 073 356 6417. I have relocated and she worked for me for 9 years. For a reference contact Loura 083 305 2519.

**DOMESTIC LADY:** We have a very reliable, hardworking and trustworthy lady that needs to fill her week – on a Tuesday and Thursday. She has been working for us for 4 years. For more details and a reference please phone me Susan 082 8515 711

Linah is looking for domestic work in the Estate on a Tuesday please. She has worked for us for 7 years and is hard-working, honest and reliable. She lives in the Estate. Please call her on 079 476 0901

Reliable, experienced, mature domestic helper needed. Must understand and speak English. Domestic accommodation will be provided for live-in. Reference is required, please contact K Pillay, 072 632 3025.

Mary is looking for additional work in the estate on Mondays, Wednesdays and Fridays. She has worked for me for 10 years and is reliable and hard-working with a bubbly personality. Her number is 060 413 3134. For reference contact Lisa on 082 377 6686.

## LIFTS

I am looking for reliable transport or lift to Pretoria Boys High School on a daily basis for the mornings only. Please contact Elsie at 082 579 3033.

## PARTY

Party Packs, Cupcakes, Birthday Cakes, specialised in Diabetic/Banting Cakes and a Bubble Machine for hire at one location. Contact Melindia on 082 414 9273

# SMALLS

## TAX RETURN

Need assistance with your tax return?  
Contact Jackie @ 084 658 9145/jackie.amdt@vodamail.co.za.

## PET SITTING:

I ensure that your pets are cared for and fed while you are away, whether for one day or many more. Call me to arrange for me to meet you and your pets – Michiel Brand 071 01 609 13/ 082 44 858 44 [www.mypetcare.co.za](http://www.mypetcare.co.za)

## HOUSE SITTING:

I am a resident in IFV, Phase 1, and apart from feeding pets, I also attend to your home even if you do not have pets. I check that the electricity is on, that the swimming pool pump is working and any arrangements around your gardener/domestic worker. Phone me, Michiel Brand 071 016 0913/082 448 5844.

## JUMPING CASTLES AND HELIUM BALLOONS

@ 42 Country Club Ave. Contact Werda Tel: 082 822 8659 or visit [www.creativecastles.co.za](http://www.creativecastles.co.za). Facebook: @creativecastlespta

## NAILS BY M

Manicure • Pedicure • Acrylic nails • Gel overlay  
Available after hours. Look out for monthly Specials  
Contact Melindia on 082 414 9273. Stand no 1123 Village Main Road.

## REPAIRGUYS

For all your home maintenance and repair needs. Specialising in:  
\* Waterproofing \* Painting \* Tiling \* Plumbing  
\* Irrigation and grey water systems \* Air conditioning - new installations and maintenance. Contact Lance for a quote: [lance@repairguys.co.za](mailto:lance@repairguys.co.za); 082 447 7095.

## INTERNET

Uncapped, Unshaped, Reliable Wireless Internet!  
Contact Starbright today to hear how we can help you with an affordable and reliable pure uncapped, unshaped Internet connection. No caps, no unforeseen data charges, just Internet the way you want it! Tel: 012 004 0080; [info@starbright.co.za](mailto:info@starbright.co.za); [www.starbright.co.za](http://www.starbright.co.za)

## WORK FROM HOME:

Are you looking for a business opportunity where you can build a sustainable small/medium business and generate a second income? Work from home and determine your own income potential. Be part of an excellent business model, exceptional training and support, additional bonuses for driven individuals, and getting paid like clockwork on the 15th of every month. Call Elmarie: 084 955 5999.

## KINDLY NOTE:

**ALL SMALLS ADVERTISEMENTS NEED TO BE RESUBMITTED EVERY MONTH.**

If you would like to advertise in our smalls section, please contact us:

Tel: 012 662 3505 • email: [admin@irenefarmvillages.co.za](mailto:admin@irenefarmvillages.co.za)



COMMUNITY • CHARACTER • COURAGE

JOIN US EVERY SUNDAY

07:00AM | 08:30 AM | 10:00 AM

8 JAN SMUTS AVE, IRENE

A vibrant multicultural church purposed with a mission to serve the nations of Africa. This cutting edge organisation founded by Pastors Bert and Charne Pretorius, has become a source of inspiration for millions across the nations of Africa proclaiming a message of hope, healing and restoration.



@my3c\_



3C



@my3c\_



[www.my3c.tv](http://www.my3c.tv)



086 111 2345





# APPROVED ESTATE AGENTS

**4<sup>th</sup> Avenue Properties**  
 021 471 4731 / 021 471 4732  
 BUYING \* SELLING \* LETTING  
 CLEANING \* MAINTENANCE

**Apple PROPERTY CONNECTION**  
 Lenie Visagé & Liesl van Staden  
 083 259 5342 & 084 870 1465  
 lenie@appleproperty.co.za  
 liesl@appleproperty.co.za  
 www.appleproperty.co.za

**BuySell**  
 THE REAL ESTATE COLLECTION  
 Principal: Nina Antoniou  
 Agent: Nina Antoniou  
 Cell: 082 963 1994  
 Agent: Eunice  
 Cell: 071 676 5940  
 Office: 012 667 3692  
 Fax: 086 617 0516

**FINE COUNTRY**  
 We want to sell your home!  
 Clearwater Flyfishing Estate  
 Rietvalleirand and Irene  
**MAGDALEEN ERASMUS**  
 Tel: 082 775 3082  
 magdaleen.erasmus@fineandcountry.com  
 www.fineandcountry.com

**JUST PROPERTY**  
 Jana Brink and Frank Roos  
 Cell: 072 402 0181/  
 Cell: 082 555 0466  
 Office: 012 667 5201  
 jana.centurioneast@justresidential.co.za  
 frank.centurioneast@justresidential.co.za  
 www.justpropertygroup.co.za

**Leane Graaff**  
 Principal: Leane Graaff  
 Agents: Leane Graaff  
 Cell: 083 457 3184  
 Office: 012 689 2018  
 Fax: 086 698 6210  
 Email: lgstates@absamail.co.za

**leapfrog**  
 PROPERTY GROUP  
 Steven Kruger  
 082 699 4881  
 steven.kruger@leapfrog.co.za

**PAM GOLDING PROPERTIES**  
 Principal: Retha Schutte  
 Office: 012 644 8300  
 Fax: 012- 664 6790  
 Agent: Peter Varrie  
 Cell: 082 457 7416  
 peter.varrie@pamgolding.co.za

**RealNet**  
 Jeane Minnie  
 082 092 9947  
 jeanem@realnet.co.za

**RM REALTORS**  
 PROPERTY BUYING - SELLING - RENTALS - DEVELOPMENT LAND AND COMMERCIAL  
 Machelle Henning-Walker  
 Kantoor: 071 657 7555  
 Cell: 082 789 7888  
 machelle@rmrealtors.co.za  
 Stand 2185, Halfmoon Drive,  
 Irene Farm Village  
**www.rmrealtors.co.za**

**Seeff**  
 Principal: S.J. van Wyk  
 082 454 9813  
 Tracy Keyter: 082 928 8219  
 Tracyk@seeff.com  
 Sylvia Meneely: 084 010 8504  
 sylvia.meneely@seeff.com  
 Office: 012 667 2167  
 Fax: 012 667 3566  
 www.Seeff.com

**SUPERIOR REALTY**  
 Jonathan Koen  
 Cell: 073 206 3877  
 www.superiorrealty.co.za  
 jonathan@superiorrealty.co.za

## IMPORTANT NUMBERS

Police Emergency	10111
Lyttelton Police Station	012 644 8600
Pierre van Ryneveld Community Policing Forum	079 528 1630

Fire Emergency	10177
Medical Emergency	082 911

Security at Gates	012 662 1688
Guard House Main Gate	42831
Guard House North Gate	42832
Security Manager	082 300 1835
Protea Coin Shift Manager	082 838 7779
Irene Farm Controller	082 947 7610

<b>Irene Farm Villages:</b>	
Estate Office	012 662 3505/5601
Estate Manager	079 525 9281
Assistant Estate Manager	079 702 2288

<b>Managing Agent: Account Ability</b>	
• Tel: 082 780 0059 • Fax: 086 671 9798	
• info@aams.co.za	

*intrigue*

**Tropical summer**

Shop 43, Southdowns Shopping Centre,  
 Cnr Nellmapius Drive & John Vorster, Irene,  
 Centurion | Tel: 012 665 2189

# Stockade infestation

One of the characteristics of the urban stockades that are springing up wherever I look is that they have become infested – yes, that is the word – with fluffy little white dogs that seem to be specially bred for housing estates.



Among the Rottweilers, Bouviers and German shepherds that my family has had over the years we've also had two of these – both were Maltese terriers. The first was named White Fang and the other, Susie. The latter was foisted upon us by a daughter who married a man whose two Alsations had a poor tolerance for little white dogs.

I still have to work out a use for a Maltese terrier.

Rottweilers, for instance, are working dogs (although our old Rotty never did a stroke of work in his life) and, at night, they double up as security guards. They are dumb though. If you put your head next to a Rottweiler's you can hear the ocean.

Great Danes are also working dogs; retrievers are hunting dogs; Bouviers de Flandres are extremely bright and were used in the Belgium Army's intelligence unit during World War 2 – which might explain why Belgium surrendered after 24 hours).

We had a Bouvier whose great granny was a spy and claimed she knew James Bond.

But Maltese? Of what use are they?

Could the people of Malta have used them in the army to drive the enemy mad with their yapping or, maybe, for

getting under the enemy's feet causing them to fall about?

Some time back, South Africans, jittery about the rising number of burglaries, were taking their funny little dogs to the SPCA to swop them for something bigger and fiercer.

I took White Fang.\* I had always resented the way it had been foisted upon me. (It was the day my daughter turned six and I was summoned by phone to come straight from the office to a shopping mall where I was to rendezvous with the females of my family, they outnumber me 3–1, at a pet shop. And there stood the birthday girl cradling a small bundle of white fluff whose its two beady black eyes peered from deep inside the hair.

I said that I thought I had made myself clear: NO MORE DOGS! They looked at me as if I said something.

Anyway, White Fang grew up into a dirty, noisome bundle – as ugly as sin with an undershot jaw. Because the face mercifully grew over with hair, both ends of the dog looked much the same. White Fang looked like something that is kept in a broom cupboard. I once saw the gardener polishing the car with it.

I said to the lady at the SPCA, "I'll give you this cute little doggy if you give me

that black Alsatian with the impressive dental battery".

She said, "But why do you want to get rid of such a darling little creature?"

I said I needed something that would eat burglars or at least carry them outside and dump them on the pavement. Though it occurred to me that one bite from White Fang and a burglar would die of septicaemia but not in time to stop him stealing my cookie jar (I have no valuables unless you count my collection of beer mats.)

The SPCA lady, making those silly sounds that women make when addressing small dogs, was trying to tickle it under the chin.

I said: "Its chin is at the other end".

She parted the hair at the right end to reveal two crossed eyes. She said: "I still think you are being very unkind to this dear little animal."

So I took White Fang home and eventually bought a Rottweiler which was terrified of it.

(\*I didn't really.)

For more James Clarke, visit Blogsite:  
<http://stoeptalk.worldpress.com>  
or [www.jamesclarke.co.za](http://www.jamesclarke.co.za)





# Good Fellows transforms the Pawn Broking Industry

**S**trange but true, the pawn broking industry has become increasingly popular in recent years. Be it because of well-known television shows that give insight into the pawning process or because of the poor state of our economy, which has forced many families to source other financial means to survive – either way the industry is booming, and rightly so.

Pawn brokers are offering a smart and simple alternative for individuals seeking out loans. Rather than taking out a bridging loan to tide one over until payday, which involves paying back money at excessively high interest rates, people are leaning towards going to pawn brokers who offer cash loans in exchange for collateral items that can either be given up altogether, or paid back over an agreed period in order to reclaim the pawned property.

One of the biggest benefits of pawn loans is, should a client default on their repayments, it doesn't affect their credit rating, like other types of loans do. Failure to repay the loan within the specified time means the broker is able to sell the pawned item and pocket the reward.

Heading up the pawn industry in South Africa is Good Fellows Pawn Brokers who are well experienced and provide a bespoke pawn broking service to clients looking for a lucrative channel to sell unwanted goods or a hassle free solution to soothe financial woes. "We are not looking to put our customers in more debt, our focus is on helping them to escape it," says the team of Good Fellows Pawn Brokers.

Specialising in the pawning of vehicles, including cars, bakkies, trucks, buses and boats, their mission is to reinvent the image surrounding pawn broking by offering a quick, discreet and professional service tailored to suit individual needs. The transparent and confidential service delivered by the brokers at Good Fellows helps them to seal the deal as the number one pawn broker in South Africa. Each client has the option to pawn and sell or pawn and rent, and the broker guarantees the best prices on all vehicles and ensures immediate pay-outs for the

convenience of the client. Having built up a sterling reputation for themselves over the years, Good Fellows continues to exceed the expectations of their clients, who are grateful for the stepping stone that the popular pawn broking establishment provides them with.

One of their clients, John Adriaansen proudly comments on his experience with Good Fellows as "Quick, easy, great service and, best of all, instant cash with no credit checks!" He goes on to say, "Thank you Good Fellows for helping me, so that I can enjoy the holidays with my family." Other testimonials include praise from Patience Sebakwa, "Good Fellows you are truly amazing! Thank you for giving me instant cash for my car!" and Pieter Ramsden who has become a raving fan of Good Fellows Pawn Brokers: "Wow, what a quick and easy service! Good Fellows came to me. I pawned my car and was able to pay my children's school fees. Thank you Good Fellows!"

Their seamless platform has undoubtedly had a positive impact on the general community as they enable people to pawn their collateral without the unreasonable restrictions and excessive costs involved in taking out loans via other financial avenues. Good Fellows Pawn Brokers will continue to be game changers in the industry, by giving hope to those who have hit a dead end and going the extra mile to get them back on their feet.

For more information contact Good Fellows Pawn Brokers on 086 001 5656 or visit their website [www.goodfellowspawnbrokers.co.za](http://www.goodfellowspawnbrokers.co.za)

# CRAFT FAIR

22 - 25 September

10am - 5pm daily

View a wide range  
of gifts and crafts



woodlands

[www.woodlandsboulevard.co.za](http://www.woodlandsboulevard.co.za)

