



The Villager

Issue 10 • 2020

NEW MISSION AND VALUES FOR IRENE FARM VILLAGES

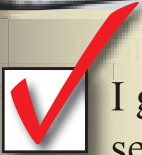
This year's
Annual Fun Day
cancelled

Farewell to Nomthi

A Day Out at Rietvlei Nature Reserve

WHEN SELLING YOUR HOUSE WHICH ONE WOULD YOU CHOOSE?

Superior Realty commission
R70 000



I get better marketing, better service and more money in my pocket for less commission.

Other agents commission
R300 000



I like to over pay for inferior marketing and service and I want less money in my pocket so the agent can get more.

R70 000 fixed commission means a better listing price,
quicker sale, improved marketing and more value for the
buyer and the seller
– it just makes sense, doesn't it?



CONTACT:

Jonathan Koen: 073 206 3877 | 012 662 5663 | jonathan@superiorrealty.co.za | superiorrealty.co.za

Contents

Message from the Estate Office	3
Financials	7
Marais 4 Architects donate wheelchairs to the Hope School	8
Chess by Knight	10
A Day Out at Rietvlei Nature Reserve	14
TikTok – Parents beware	17
Smalls	20
Accredited Estate Agents	21
Important Contact Numbers	21
Irene Service Providers	22
James Clarke: Golf, the oldest game in the world	24

Cover Photograph taken at Rietvlei Nature Reserve by Idalette van der Bijl

The Villager focuses on Irene Farm Villages. The magazine is delivered to the home of each resident on the Estate. The magazine is co-ordinated and published by Estates in Africa (Pty) Ltd on behalf of the Home Owners' Association of Irene Farm Villages. The opinions of workers and personnel of Estates in Africa (Pty) Ltd do not necessarily reflect those of the HOA of Irene Farm Villages.

Publisher

Nico Maritz
E-mail: nico@eiapublishing.co.za

Editor

Bev Hermanson
E-mail: bev@eiapublishing.co.za

Sales Manager & Advertising

Martin Fourie - Cell: 072 835 8405
E-mail: martin@eiapublishing.co.za
Office: 012 997 2712

Sales

Frans Meyer - Cell: 072 267 3141
E-mail: fransm@nowmedia.co.za

Production Co-ordinator

Chris Grant
E-mail: chrisg@nowmedia.co.za

Graphic Design

Diane van Noort
E-mail: d2vn@mweb.co.za

ESTATES IN AFRICA (PTY) LTD HEAD OFFICE:

Tel: 011 327 4062
32 Fricker Road, Illovo, Johannesburg
www.eiapublishing.co.za

Deadline for advertisements and editorial contributions:
12 October 2020



"YOUR TRUSTED PROPERTY PROFESSIONAL"

Léane Graaff Properties

French Provincial style beauty – R3,990mil

UNDER OFFER



Size 350m/2, 4 beds, 3 baths, 3 living areas, DQ, Pool 2 outside patio's.
Neat as a pin, just move in.

To Let R30k per month – Available immediately



4 en suite bedrooms, study, DQ, ample parking, 3 Garages

**SOLD BY
LEANE**



**SOLD BY
LEANE**



**SOLD BY
LEANE**



**SOLD BY
LEANE**



**SOLD BY
LEANE**



**Stock urgently
needed for
approved buyers.**

Excellence, Professionalism, Results • Cell: 083 457 3184 • r.graaff@absamail.co.za

Is it Time?

If you're thinking of selling, I would love the opportunity to showcase your property to an extensive, proprietary database of quality buyers.

Contact me any *time*

Peter Varrie
082 457 7416

Irene Farm Villages and Centurion Golf Estate

Dear Residents

All the lockdown questions that were asked in the previous issue of *The Villager* remain, to a certain extent, unanswered. However, there are signs of positive recovery of our daily livelihoods on many levels.

Spring is in the air, and we must not miss out on it. We need to enjoy the presence of spring and the beauty that goes with it. All over the estate, residents are seen preparing their gardens for the summer. It's a real pleasure to see the deciduous trees with their new buds and light green foliage coming out.



At van Niekerk

The finalisation of the date for the Annual General Meeting (AGM) is still in process, after the Companies Tribunal indicated that it had no jurisdiction to allow for the postponement thereof. The Board of Directors is still challenged by determining the number of people that may attend a meeting (gathering) at a specific venue in accordance with the Level 1 COVID-19 Lockdown Regulations. They will communicate with the Members of the Home Owners Association in this regard. The aim is to hold the AGM during November 2020.

The finances of the Home Owners Association are in a sound state. The 2019/2020 audited financial statement will be presented to the members at the AGM, and the statement will be circulated to all the members with the AGM notice. The year-to-date monthly financial statement is published in this issue as usual and any questions can be directed to the HOA's Financial Sub Committee, via the Estate Manager, who will gladly assist.

The Infrastructure Development Plan (IDP) can eventually kick off as the building plans for the main gate were approved by the Tshwane Metro City Council (TMCC). The Board of Directors, after a long and in-depth discussion, approved the commencement of the building work in January 2021. As reported before, the Quantity Surveyor (QS), who is also the appointed Principal Agent for the project, has finalised the tender for the building contractor. The building contractor should be appointed during October/November 2020 with all the sub-contracts to be finalised during this period. The scheduled plan for the construction work will be shared with the residents in due course. It is anticipated that construction will commence at the North (2nd) Gate (Project One), followed by construction at the Main Gate (Project Two). The duration of these two phases is expected to take between eight to nine months. Residents can expect huge traffic disruptions in accessing the estate during the construction period, especially when exiting in the morning, when traffic hold-ups will be encountered. Residents will, therefore, have to allow for additional time to exit the estate.

There was no security breach of the perimeter fence, nor any



The walking trail has been tidied up and the route markers cleaned. We urge our residents to make use of the walking trail and enjoy the veld areas in the estate, especially early in the morning or late in the afternoon. Waste bins have been put out at strategic points and we call on all the walkers not to litter. For our new residents, the trail starts at the post office, and from there, its distance of 4km is marked out.





security or criminal activities reported inside the estate during the past month. This can be attributed to the quality of the service rendered by the Bidvest Protea Coin Team. The Security personnel are safe and healthy, and no COVID-19 infections were reported, for which we are very grateful. The upgrading of the Security Control Room at the main gate was completed. The upgrades will protect the security-core in the event of an armed attack and attempted seizure of the security network.

We received some positive feedback from residents on the introduction of the Irene Farm Villages' 'Dog Walkers'. We urge our residents to make use of these keen dog walkers, especially if you find yourself in a situation where you cannot take your K9-friend for a daily walk. We have noticed that some residents who take their dogs for walks, do not pick up the pooh, which is the prescribed responsibility of the dog owner, resulting in dog pooh being left on the lawns of other residents, in parks and on the walking trail. This situation cannot be tolerated anymore. Residents who are found to transgress this rule will be penalised. We kindly ask for your support in this matter. As we are approaching the summer months, when residents tend to walk their dogs more often, we would like to appeal to all, when walking your dog, to make sure that your dog is always on a leash and under control. You are not allowed to let your dog run loose at any stage outside of your property, as there are small animals in the veld and dogs tends to chase these animals.



In the previous issue of *The Villager*, the question of road safety in our estate was addressed in depth with a supporting article written by Josh Truter. It seems that the lawlessness that one finds generally on our local roads is spreading into our estate, a tendency which cannot be tolerated in Irene Farm Villages. The Estate Management will apply traffic law enforcement on residents and visitors speeding and failing to stop at the stop signs. Residents are reminded that they remain responsible for the conduct of their own visitors. Hence, if a visitor fails to stop at a stop sign, the penalty will go to the resident.

The garden service team has done a lot of preparation for the coming summer months ahead of us. A total of 55 trees died during the winter, mainly due to the severe cold winter we had this year. These trees will be replaced with similar trees in the weeks to come. A White Ironwood tree was planted at the post office in memory of the late Christiaan Erasmus, and a plaque will be mounted there.

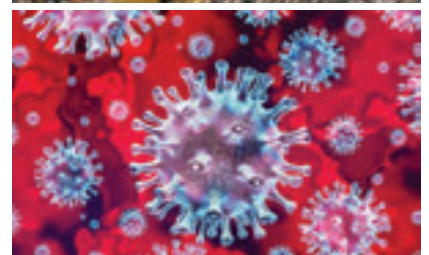
The maintenance and painting of the steel palisade fence was completed in September 2020 at a cost of about R250 000,00, which costing was part of the 2020/2021 operational budget. The work was carried out by PWC Contractors under the supervision of the Project Manager, Mr Julian Kotze.

The COVID-19 health and safety regulations are still in place at the estate office. Visitors will be requested to sign in and to sanitise before entering the estate office.

Due to the COVID-19 pandemic, it was decided to cancel the 2020 annual fun day. The risk of having all the children taking part on the day, being close to one another, the use and sanitising of the equipment, wearing masks and being crowded with the traditional visit by Santa Claus, was too big a challenge and it would put the health of our residents unnecessarily at risk. However, we will still have Santa Clause visiting us, but this year Santa will deliver the presents at the

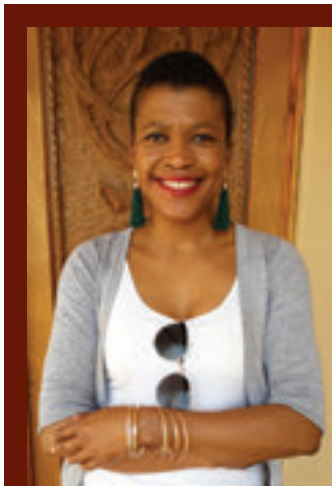


Sebastian, the younger brother of the late Christiaan Erasmus





individual houses on a specific day and time. More information will be communicated to all the residents during October/ November. So, you can prepare the young ones for something special this year, although just a bit different.



Our Office Assistant, Miss Nomthi Zebekhulu has resigned with effect from 30 September 2020. She will be relocating to her family in Kwa-Zulu Natal. We would like to thank Nomthi for her dedication and hard work during the past year and a half and wish her only the best of luck in her future career.

The Board of Directors has adopted the following mission and values for the Irene Farm Villages Home Owners Association:

MISSION

The Board accepts that it is ultimately accountable and responsible for the affairs of the Association. In managing and directing these affairs, the Board has the authority to exercise its powers (limited by the Companies Act and the Memorandum of Incorporation) to perform the functions of the Association and delegate certain powers to sub-committees of the Board or employees of the Association.

The Board is committed to maintain Irene Farm Villages as a sought-after residential estate offering a unique village and country lifestyle in the heart of Gauteng.

VALUES

The Home Owners Association, through the Board of Directors seeks:

- To ensure that the highest priority is given to the security and well-being of residents, and staff employed by the Association.
- To safeguard and grow the market values of properties within the estate.
- To adopt a responsible and conservative approach to the finances of the Association, particularly as its income is largely limited to levies payable by members.
- To negotiate in good faith with all suppliers for the mutual benefit of both parties, while ensuring fair value for the estate.
- To preserve the natural environment in the estate and encourage the maintenance of a village spirit.
- To develop and maintain sound and professional relationships and engagements with local and other relevant authorities.
- To function with the highest levels of integrity, honesty and respect.

The appointed contractor of the Tshwane Municipality started with the rehabilitation of the existing 'old' sinkhole in Queens Way on Monday, 21 September. The rehabilitation is expected to take about four months to complete, depending on the weather conditions. Several heavy machines will be operating on site and moving around in the estate. Residents are requested to be on the lookout for these vehicles. .

The end of year examinations are approaching, and we would like to wish all scholars and students the best of luck, especially the matriculants, and remind them of the words by Jim Rohn:



"For every disciplined effort there is a multiple reward."

Best regards,

*Estate
Management*



www.biltongshoppe.co.za

info@biltongshoppe.co.za

060 709 7191

We are a family run online biltong store. We pride ourselves in quality products and great service.

Visit our website for true testimonials

Follow us in Facebook and Instagram



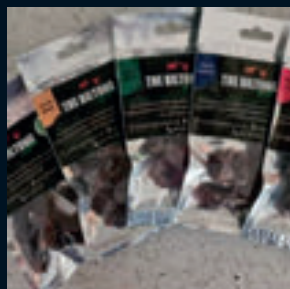
Biltong Products

- Chili Bites
- Biltong sticks
- Droëwors
- Biltong Blare
- Game Droëwors
- Chili Game Droëwors
- Biltong
- Chutney Wheels
- Game Biltong

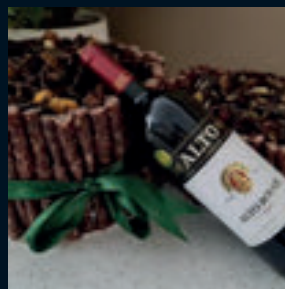
Gift Boxes



Snack Packs



Cakes



Platters





IRENE FARM VILLAGES HOME OWNERS ASSOCIATION

Summary Income Statement – August 2020

August 2020 Year to Date YTD Variance
Actual Budget Actual Budget Value %

Operational Income						
Levy Income	1 166 332	1 166 333	6 939 817	6 939 820	(3)	0.0%
Other Income	41 288	32 500	331 419	315 300	16 119	5.1%
	1 207 621	1 198 833	7 271 236	7 255 120	16 116	0.2%
Operational Expenditure						
Professional /Administration	61 876	138 216	516 821	508 296	(8 525)	-1.7%
Accounting and Auditing	41 237	106 237	311 129	316 422	5 293	1.7%
Insurance, Legal and Admin	20 638	31 979	205 693	191 874	(13 819)	-7.2%
General Office	3 822	10 306	24 369	68 836	44 467	64.6%
Office Administration	3 822	10 306	24 369	68 836	44 467	64.6%
Operational Expenses	237 823	234 568	1 179 227	1 367 032	187 805	13.7%
Municipal Charges	78 704	50 244	220 011	290 088	70 077	24.2%
General Operations	9 908	25 003	71 021	130 018	58 997	45.4%
Salaries & Wages	149 211	159 321	888 195	946 926	58 731	6.2%
Security	474 747	488 628	2 830 063	2 916 800	86 737	3.0%
Security Operations	52 957	63 171	292 912	392 352	99 440	25.3%
Guarding Services	421 790	421 257	2 530 739	2 499 248	(31 491)	-1.3%
Insurance Claims and Excess	0	4 200	6 413	25 200	18 787	74.6%
Repairs & Maintenance	161 231	193 084	728 773	1 064 015	335 242	31.5%
Repairs & Maintenance	18 157	50 010	163 292	226 010	62 718	27.8%
Park Maintenance Contract	143 074	143 074	565 481	838 005	272 524	32.5%
	939 498	1 064 802	5 279 254	5 924 979	645 725	10.9%
Operating Profit / (Loss)	268 123	134 031	1 991 982	1 330 141		
Non-Recurring Revenue	6 030	0	45 795	0	45 795	100.0%
Non-Recurring Expenses	313 625	55 200	440 615	321 200	(119 415)	-37.2%
Net Positive/ (Negative)	(307 595)	(55 200)	(394 820)	(321 200)	165 210	
Net Profit / (Loss)	(39 473)	78 831	1 597 162	1 008 941		

"I say always follow your passion, no matter what, because even if it's not the same financial success, it'll lead you to the money that'll make you the happiest."

– Ellen DeGeneres

IRENE FARM VILLAGES HOME OWNERS ASSOCIATION

Summary Levy Statements – August 2020

	120+ Days	90 Days	60 Days	30 Days	Current	Total		Previous Month
Normal - Self Pay	-	-	-	-	-374 917	-374 917	-307 175	
Normal - Debit Order	-	-	-	-	-15 187	-15 187	-11 467	
	-	-	-	-	-390 105	-390 105	-318 642	
Debt Collection - AA (30/60 days)	9 888	3 694	11 900	53 432	83 806	162 720	279%	107 703
Debt Collection - JJR (90+ days)	243 843	14 518	14 003	14 158	11 725	298 246	511%	286 088
Debt Collection - KSB (90+ days)	16 619	8 073	8 897	9 025	8 642	51 256	88%	52 481
Sold - Previous Owner Accounts	-	-	-	-	-58 772	-58 772		-58 834
In Transfer	-	-	-	1 715	-9 753	-8 037		-9 987
Other	-840	-	-	1 458	2 465	3 083		2 631
	269 509	26 285	34 800	79 788	-351 992	58 391	-5.0%	61 439
Debt Collection - Accounts > R200,000	1 092 067	30 138	62 286	21 662	13 598	1 219 751	-0.6%	1 226 939
	1 361 576	56 423	97 087	101 450	-338 393	1 278 142	-0.8%	1 288 378

We want to thank all members who continue to pay their monthly levies so diligently. Amidst the COVID-19 lockdown, members are paying, and many members that did fall behind have settled all outstanding levies. We again maintained our debtors book from July to August 2020 with a 0.8% decrease. Last month there was some movement in the number of accounts outstanding, but it's not concerning at this stage. The number of accounts owing more than 3 months remained constant at 20; 60 days increased from 23 to 25; 30 days from 54 to 55.

Account Ability and the Estate Management are continuously driving collections to ensure adequate cash flow to fulfil the HOA obligations. We reached settlement with one of our > R200 000 accounts, and received first payment in July.

Account Ability

Office Address:
Sovereign Drive,
Route 21
Corporate Park

Accounting
Office Hours
8:00 to 13:00
Monday to Friday

Office Tel: 082 780 0059

Accounts Email:
accounts@aams.co.za

IFV Accounts:
Winnie Boshoff

Summary Income Statement by Account Ability

Irene Farm Villages Home Owners Association – Capital/ Development Projects

	Current Stage	Current Status	Approved Budget	Actual Spend To Date	Available Budget
Infrastructure Development	Planning		8 797 910	724 799	8 073 111
Security Upgrade Project	Define		1 700 000	1 583 234	116 766
Total			10 497 910	3 032 832	8 189 877



*Back: Coenraad Steyn and Eben Marais of Marais 4 Architects, with staff from the Hope School.
In front (L-R): Banele Vezi (diagnosed with cerebral palsy - spastic diplegia) and Keabetswe Moremi (diagnosed with spina bifida) received the wheelchairs from Marais 4 Architects.*

MARAIS 4 ARCHITECTS DONATE WHEELCHAIRS TO THE HOPE SCHOOL

For the past 7 years, Marais 4 Architects have donated wheelchairs to the Hope School in Johannesburg. The official handover of two wheelchairs was done on Friday, 4 September 2020. Coenraad Steyn and Eben Marais (from Marais 4 Architects) were there to hand over these wheelchairs.

"Our company always strives to bless and uplift others. It is especially

important to lend a helping hand in these difficult financial times that our country is facing. We have a passion for assisting people with disabilities and salute their fighting spirit," Eben Marais says. "We feel privileged to be able to handover these wheelchairs to improve the quality of life of the recipients."



MTN Home Wi-Fi

just plug 'n play

Fast and reliable
home internet
right now.

Not now now!

**Visit an MTN store
today.**

Connects up to
64 USERS

*We're good together
everywhere you go*



DRIVE YOUR UNCONVENTIONAL.

The first-ever BMW 2 Series Gran Coupé is here on our showroom floor, come and test drive a car that was built for those who like their assets to reflect their individuality. Experience for yourself the standalone style and design, the illuminated interior trim finishers, the Live Cockpit Professional and panorama glass roof as well as a host of other features that lend the car an air of sophistication, comfort and spaciousness unrivalled in its class.

Take control at BMW Centurion. To book your test drive, email info@bmwcenturion.co.za or call 012 683 4000 today.

BMW Centurion

2023 Lenchen Ave S, Centurion Central, Centurion
Tel. 012 683 4000
www.bmw.co.za/centurion

CHESS BY



The column this month begins with the story of a primary school's chess final. The principal was keen that the Grade 1 and 2 learners should learn more about chess. He invited a good friend of his, Richard Morris, to watch the games. Upon his arrival at the school on Friday afternoon the chess teams from the primary school were about to play a match against another primary school team. He was informed that the match would soon be over. At the stroke of one o'clock (lightning) the match started. What followed were ten games of chess if you could call it chess. There was non-stop nervous chattering among the learners, with pieces banged with gleeful enthusiasm and fiendish shouts of glee when opposing players lost pieces by leaving pieces *en prise*. It was more like a game of skittles rather than chess. The result between the schools was five all, each school winning five games and losing five games.

Richard marvelled at this enthusiastic

bunch of eight- and nine-year olds. He did not want to curb the enthusiasm of the players and offered to play all twenty simultaneously. The challenge was accepted with raucous incredulity. After half an hour, the score was 20-nil in Richard's favour. The noisy behaviour had now subsided and Richard was asked by the learners and teachers how it was possible that their best players were beaten so easily. The headmaster and teachers watched the exhibition with amazement and inwardly asked themselves the question, "How it possible that Richard could win all the games so easily since a number of the players represented their province at chess?" When asked about the quality and standard of the chess, Richard sardonically replied that, "Some showed promise but there is room for a little improvement!"

This story is typical of schools chess in South Africa where the emphasis is on quantity in the vain hope that a naturally

The opening phase of the game

Avoid trying to memorise the opening variations and lines, rather learn to play certain openings well and adhere to the following opening principles:

- **Control the centre:** This is usually achieved by playing the central pawns forward two spaces. If you control the centre, your pieces can attack on both sides of the board.
- **Develop your pieces:** This is usually done by developing the knights first to put pressure on the central squares.
- **Activate the rooks:** Once the squares between the rook and king are vacant, a player can castle, thereby activating the rooks.
- **Space:** The more space beyond the demarcation line you control the better attacking chances you have.
- **Coordination and cooperation of the pieces.** Development should take place so that there is coordination and cooperation between your pieces.

The middle game

- The middle game can be characterised by two types of thinking – tactical elements and strategic considerations.
- You must remember that the tactical elements are to a large extent determined by the strategic components of the game.

The tactical elements of the game

One should consider the following when playing and one must ask oneself the following questions in each case:

1. **The Pin** – are there any pins possible for me or against me? How can I exploit a pin in my favour and how can I protect against pins?
2. **The knight fork** – do I have any possible knight forks? Are there any possible knight forks against me?
3. **The discovered attack (check)** – Make use of placing bishops and knights in front of bishops, castles, and the queen to unmask an attack upon an enemy piece. Am I threatened by a discovered attack?
4. **Double attack** – attacking two enemy pieces at once.
5. **Removing the guard** – to leave an enemy piece vulnerable to be taken.
6. **The overworked piece** – no man can serve two masters.
7. **Are there combinations involving all the above elements?**

Strategic considerations

It is possible to subdivide strategic considerations into three main groups:

1. **Analysis** of the possible future variations (thinking ahead in chess.) This involves the **branching tree of variations**, looking at the best possible moves for both sides and choosing the line that is best for your pieces.
2. **Evaluating the position** – to diagnose the strengths and weaknesses in the position: the material balance of the game, looking at the pawn structure, types of pawns (weak pawns and strong pawns), the mobility of the pieces in terms of open files and diagonals. The critical question is: Who stands better and why?
3. **Planning:** There are two types of plans:
 - **Short term plans:** Solving immediate problems and threats.
 - **Long term plans:** Involve manoeuvring one's pieces into a better position.

General middle game considerations

- Look at the position through the eyes of an amateur before making your move, asking yourself the following questions: Can I lose a piece for nothing and is the move I am about to make an outright blunder?

talented player may be found among the many learners. This raises the question, what is wrong with the standard of chess at primary school level?

Gone are the days when 9- and 10-year olds such as David Friedgood and Piet Kroon competed successfully at the South African schools' championship and played a high standard of chess. Perhaps it is time to learn from the mistakes players often made.

- **Magnus Carlsen**, the present world chess champion, said once in an interview that chess taught him to sit still and to concentrate at the age of eight. He quickly realised that chess was a difficult game and that he needed to improve his thinking and understanding of the game.
- Five-minute chess is 'little skittles' and great fun, but the Russians believe it is detrimental to good chess. The Russian Chess Federation banned their juniors from playing five-minute chess. The above scenario simply would have not occurred.

Many top-class players spend hours practising and improving their chess thinking skills. This raises the question, "How and what should the chess player consider in his thinking when playing the game?"

The table alongside, on page 10, summarises some of the main components of chess thinking during the game.

If the chess player begins to think logically about the moves and in accordance to the thinking skills, it is impossible to play the game quickly and therefore it is necessary to spend time when considering what moves to make. The player at an early age must practise to acquire these skills. This does not involve playing the game at breakneck speed.

Types of thinking during a tournament chess game

The classical chess time limit is 90 minutes for the first 40 moves, followed by 30 minutes for the rest of the game, with an addition of 30 seconds per move starting from move one for each player. The critical question is, how should each player use his time? Botvinnik, a former world champion, suggests the player should devote his time to analysis and tactical considerations, and his opponent's time to strategic considerations.

In the following position, it is Black's move. Let us analyse both the strategic and tactical elements of the game.



- **Strategic components:** Black has the advantage in terms of space and development. White's C3 square is weak. Black's pieces are poorly placed and Black controls the g-file.
- **Tactical component (removing the guard):** If Black plays Rxg1 check then White is forced to play RxR and this followed Bxh3. Black converts his strategic advantage to a material advantage.
- **Strategic plan for Black:** Queen moves to C7 → O-O-O → advance of C pawn to open the position with N eventually moving to D4.

- Continuous strategic and tactical analysis occurs after each move. If Black achieves the above short-term strategic plan, **then the position is reassessed**, and **another short-term plan** is devised.

Playing tournament chess is hard work and one cannot rush when playing. It is an examination of one's chess thinking skills. To be successful, young players cannot play as described in the story of the primary schools' chess match and their thrashing in the simultaneous games against Richard Morris.



eco rubber[®]
rubberised sealer

Waterproofing at its best



www.ecorubber.co.za

AVAILABLE AT



012 362 6089

info@hilite.co.za

1093 Burnett Street, Hatfield, 0083

www.hilite.co.za

Various Applications

Waterproofing
Rust Prevention and Rehabilitation
Encapsulating
Chemical Fallout Protection

Surface application

Concrete • Asbestos • Tiled Roofs • Patio's

Superior Performing Eco Membrane

Seamless membrane that protects substrate against corrosion, water damage, chemical attack

Exposure to industrial chemicals, water, salt, acid rain, soil and airborne contaminants

Bonds to most construction materials

Elongates 100% with 95% recovery

Withstands thermal cycling

Puncture resistant

Strong UV Exposure

Significant installation cost savings for customer

Minimal surface preparation required

One coat system

Environmentally friendly and

VOC Free

Non Toxic

No special permitting needed

All products are Solvent-free

Non-Flammable

No special clothing needed for application

APPROVED APPLICATORS NATIONWIDE

**Excellent
DIY product**

Available online, order now at www.hilite.co.za

eco rubber[®]
rubberised sealer

Advantages:

- Highly flexible resilient, rust control, UV and water resistant
- The pure acrylic polymer formulation resists fading and chalking
- Seals joint and cover the fine cracks
- Easy to apply with good coverage
- Application tools are easy to clean with water while wet (waterbased)
- A Maintenance coat is only required after 5 years, if necessary
- Elongates 100% with 95% recovery



White

Green

Terracotta

Brown

Light Grey

Dark Grey

Charcoal

Black

wood rubber[®]

rubberised sealer



Green

White

Dark
Brown

Brown

Advantages

- Improves life span of substrates that are coated.
- Waterproofing at its best!!
- Stretchable and contracts to its original form, therefore with standing thermal cycling.
- No solvents, therefore it is Environmentally Friendly and can be applied where rainwater is harvested.
- No negative effect on human or animal life.



012 362 6089

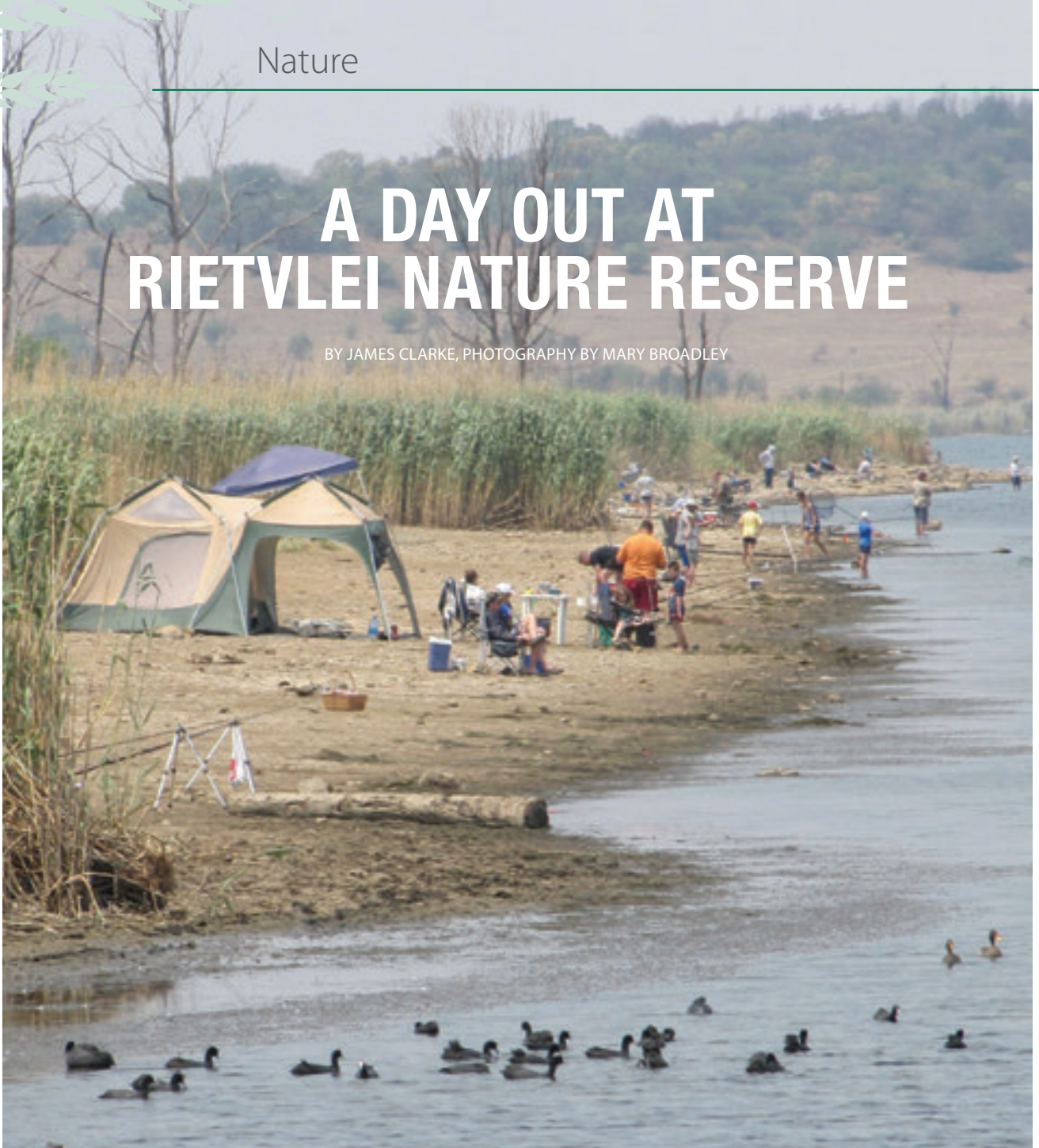
info@hilite.co.za

1093 Burnett Street, Hatfield, 0083

www.hilite.co.za

A DAY OUT AT RIETVLEI NATURE RESERVE

BY JAMES CLARKE, PHOTOGRAPHY BY MARY BROADLEY



The idea was to spend a Sunday morning birding at Rietvlei Nature Reserve to the southeast of Pretoria. I'd been there before, but long ago. But it had never before occurred to me what a splendid place Rietvlei is to take visitors - especially overseas visitors who'd like to see some wildlife.

If you've ever wondered what that rare veld type known as the Bankenveld was like, Rietvlei is an example. Bankenveld is a hummocky landform unique to the Gauteng/North West region. It comprises parallel ridges of incredibly ancient mountain ridges following the west-east line of the Magaliesberg. Incredibly ancient? The Magaliesberg is 2 000-million years old, one of the oldest ranges in the world.

Why didn't it erode away? Because the

entire region was buried for millions of years a kilometre deep under the Karoo System. This protective layer has eroded away revealing the mountain chain along whose crest there are scattered slabs of an extremely ancient fossilised shore line still with ripple marks of the last outgoing tide. Nothing lived on the landward side because the earth's atmosphere was unbreathable.

The 3 400ha Rietvlei Nature Reserve surrounds the Rietvlei Dam that supplies Pretoria with 15% of its water. When we were there - it was a Sunday - its western shore was bristling with fishing rods. There were herons, cormorants, darters, grey-headed gulls, ducks, coots, dabchicks and geese.

The dam was built during the Great Depression (from about 1929 to the

early 1930s) by otherwise out-of-work men who were fed and paid 4 shillings a month. Soil was carted away by mule carts. Feeding the dam is the Sesmyl (Six Mile) Spruit, along with some fountains and boreholes. Upstream from Rietvlei Dam is the Marais Dam which acts as a silt trap for Rietvlei Dam and is also rich in waterfowl.

The reserve can support up to 2 000 head of game. We saw zebra, eland, blesbok, red hartebeest, black wildebeest, waterbuck and, at a lower dam, hippo and an otter. There's also white rhino, springbok, common reedbuck (this antelope, despite its label, it is no longer common in South Africa now that half our wetlands have disappeared), mountain reedbuck, steenbok, grey duiker and oribi.



Leopards occasionally come in from the Magaliesberg as do brown hyena and, I am told, there are buffalo and cheetah. An adjacent fenced-off area has lions.

The sight we found most captivating were the comical antics of a pair of yellow mongooses at the side of the road. And there were tracks of porcupine and aardvark.

The birdlife is interesting too - even for non-birders for there are some really memorable species among the 319 that, potentially, could be found. The list of confirmed species is just over 270.

We were hoping to see a green sandpiper, a very rare bird on the Highveld. It had been seen a week before. We hung around with a dozen other birders on Vlei Bridge where it had been spotted but it was obviously hiding from us for we were told it popped up as soon as we left. We identified 50 species of birds - not bad for two hours - and that included the ostrich. Several ostriches in fact. As these are the world's biggest birds, it's another reason to take overseas visitors.

There are plenty of hides and some excellent, clean picnic spots with tables,

benches and sunshades, and there are lots of clean ablution facilities.

The reserve has a typical Highveld climate - dry, frosty winters with absolutely clear skies and an average of more than 700mm of rain in summer. The temperature when we were there in October was 30°C, dropping to 9°C at night.

The landscape is open grassland with undulating hills. There's a typical century-old Transvaal farmhouse with its original yellowwood floorboards, shady rooms and deep stoep which is now a café with cheerful staff - and even a swimming pool.

Because it was for many years a working farm, there are some clumps of exotic trees, especially Australian wattles, though these are gradually being removed and the wood is used as fuel. The roads are excellent and the reserve offers lakeside accommodation in one of four self-catering cottages. There are also bus tours for big groups.

The reserve is a 40 minute drive from OR Tambo Airport, or from Johannesburg's northern suburbs, and 18km from Pretoria.

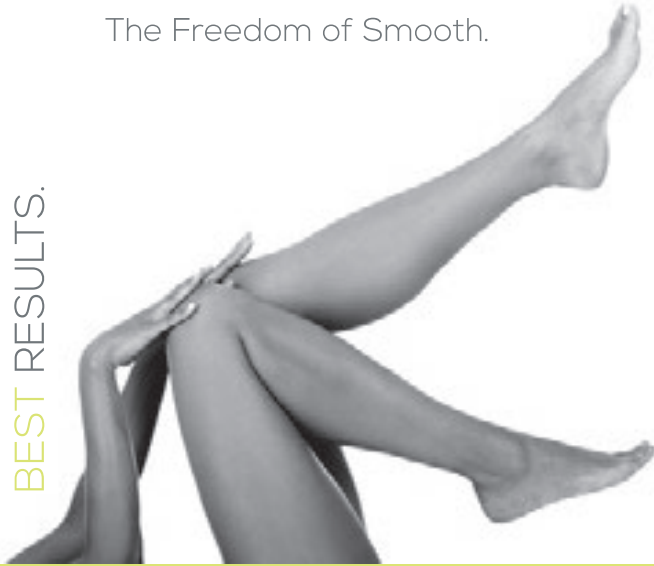
For more information, call: 012 345 2274 or 012 358 1811/12.



WAXIT

The Freedom of Smooth.

BEST PRICES.
BEST RESULTS.



SOUTHDOWNS

FOR AN APPOINTMENT

010 443 9704 | 076 746 0316

southdowns@waxit.co.za



TURN YOUR HOME INTO A SOLAR POWERHOUSE!

BEAT LOAD SHEDDING! SAVE ON YOUR BILL!

- FREE CONSUMPTION MEASUREMENT
- FREE QUOTATION
- CERTIFIED ELECTRICIANS
- PR ENG SIGN-OFF
- GRID APPLICATION READY



PVGreenCard **ACCREDITED**

SOLAR POWER DONE RIGHT!

Contact us for your FREE electricity consumption measurement
& FREE quotation: info@1greenplanet.net www.1greenplanet.net

Chris: (082) 825 4637 Lajos: (082) 904 1185

TRANSFORM YOUR BODY, TRANSFORM YOUR LIFE!

ENTER THE BODY20 FOR LIFE TRANSFORMATION CHALLENGE &
WIN PRIZES TO THE VALUE OF R50 000.



BEFORE

MARKO KOTZE

**LOST 45.8KG
IN 12 MONTHS**

2019 WINNER



BODY20.CO.ZA



**A STRONGER, FITTER YOU
IN ONLY 20 MINUTES PER WEEK**



064 159 7480



irene@body20.co.za



Shop 134, Irene Village Mall,
C/O Nellmapius &
Pierre van Ryneveld Roads,
Irene, 0157



www.body20.co.za





TIKTOK – PARENTS BEWARE

BY NICOLEEN DAVIES, DIRECTOR LIFE TALK FORUM

TikTok, the latest craze, is used by nearly one billion users and is more viral than YouTube and Instagram.

TikTok is a free app that allows users to express their creativity and imaginations in short video-sharing format. It started off as a simple lip-syncing app but has evolved to allow users to create and share their videos, featuring any musical genre within various video categories such as DIY, sport, food, comedy,

dance, animals – just about anything. According to TikTok, “It’s raw, real, and without boundaries . . . It’s from the gut, ‘come as you are’ storytelling told in 15 seconds.” You can add music, or no music, sound effects, filters, trim, cut, add emoji’s, merge – just about anything you can think of. The result is that TikTok influencers are creating

videos about everything, from politics through to childhood stories.

IS IT SAFE?

As with any social media platform, TikTok gathers information – content, messages, your likes and dislikes, friends, devices being used, IP addresses, geolocations – you name it. Its exponential growth, (especially during lockdown), and sheer scale is where the risk lies.

This Chinese-owned app has been under investigation in several countries in terms of privacy and data security issues. There are even reports suggesting that it is 'Chinese spyware'. In Korea, they were fined for mismanaging data gathered from minors. The BBC reported "TikTok collected data of children under 14 years old without the consent of legal guardians . . . the regulator found that more than 6 000 records involving children were collected over six months, violating local privacy laws." India, its largest market, has banned TikTok because of child safety issues and the UK is investigating it over similar concerns. The US is also considering a ban, describing it as a national security risk. Companies like Amazon and Wells Fargo in the US asked employees to delete TikTok from their phones due to "concerns about TikTok's privacy and security controls and practices."

This may be similar to concerns about Facebook but the real difference here is that the users are very young.

OUR CHILDREN ARE GETTING HURT

The danger though lies within ourselves, in how people are using the app.

Children are being exposed to potentially dangerous videos in the form of challenges where they are asked to mimic the content, and children are getting hurt! There are a few of these: The skull breaker challenge involves purposefully tripping an unsuspecting victim so that they fall. The aim is to get them to hit their heads on the ground. I was shown a few of the videos posted and it was horrendous to watch! Children fell really hard on their backs, some smacked their heads - the consequences can be really serious, with lifelong ramifications.

Another is the penny challenge

TikTok influencers are creating videos about everything, from politics through to childhood stories.

where children drop a coin between a phone charger and a wall plug. The consequence – a fire!

Some people use TikTok as a platform to share controversial political views and sexually inappropriate content. Young children innocently make what are actually inappropriate videos of a sexual nature and others sing along to songs filled with vulgar language. Recently, a 'campaign' was launched against Donald Trump - people were encouraged to book as attendees for his rally, to 'fill up' the venue, basically to prank him. Thousands did so and, as a result, almost no real supporters arrived on the day. Whether you like the man or not, this is questionable behaviour and shows exactly how powerful this app can be in a negative context.

BE CAREFUL WHAT YOU SHARE

The real challenge is that we can't protect our children from all the latest crazes. As we know, the more we say don't do something, the greater the intrigue will be to go and find out more

and to perhaps do exactly the opposite of what we ask.

A better approach may be to keep yourself, as a parent, informed - read up on the latest craze - let's face it, if it isn't TikTok, it will be something else. Never lose sight of the fact that these social media platforms are built with one goal in mind - to commercialise their users, which they see as their 'product'. Just like everything we buy is tracked, everything we do online is tracked and stored, and that information has value which can be used for or against us.

Invite your children to talk about their use of social media, ask questions, and debate the value of the different apps, the safety, and the perception of why they are cool. Most importantly, explain that they need to take responsibility for their own safety because no social media platform will ever truly be private and secure and they are constantly vulnerable to being exploited.

Lastly, encourage your children to apply the tips below, for their own safety:



About Life Talk® Forum

Life Talk's mission is to create happy, successful and fulfilled youth, guided by sound values. Life Talk is a non-profit organisation dedicated to raising awareness, stimulating discussions and seeking solutions to the challenges faced by parents and their children.

LIFE TALK® FORUM NPC REG:

2010/017980/08 PBO # 930 036317

OTHER SOURCES:

<https://www.digitaltrends.com/mobile/what-is-tiktok/>

<https://www.cbc.ca/kidsnews/post/5-not-so-great-things-about-tiktok-dangerous-challenges-censorship-security>

<https://www.forbes.com/sites/zakdoffman/2020/08/11/tiktok-app-iphone-google-android-data-shhttps://www.forbes.com/sites/zakdoffman/2020/07/11/tiktok-seriously-dangerous-warning-delete-app-trump-ban/#4d8353ca2b0eecurity-update-warning-investigation-trump-ban/#4e13f6b13436>

BORN TO BE FED

LUXURY IN CAT FOOD



BON APPÉTIT cat food is a gourmet meal created with the essence of decadence. The range features mousse and paté with irresistible flavour options. True mealtime indulgence to make your cat whisper "meow".



SERVICES

House Checking: Concerned about your house when you're away? I will check your house, electricity, swimming pool, inside pot plants, etc. as per agreement. Call me: Michiel on 071 016 0913 / 082 448 5844.

Pet sitting: Make it easy for yourself when going away. I will care for your pets in the comfort of your home while you are away. I have been doing this for the last 10 years and have references in and outside the estate. Call me: Michiel on 071 016 0913 / 082 448 5844 (www.MyPetCare.co.za).

Tutoring available in the comfort of your own house for all subjects in Afrikaans from Grades 1 – 4, any time between 15:00 and 18:00 on workdays or between 9:00 and 14:00 on Saturdays. For safety, I am willing to wear a mask. Please note that I am a Grade 8 student in Hoërskool Waterkloof. My hourly rate is R80. Should you be interested, you can contact my mom, Lize on 083 633 2881.

FOR HIRE

Jumping castles, tables and chairs, gazebos, kiddies' tables and chairs for hire @ 42 Country Club Avenue, IFV. Contact Werda on 082 822 8659, or visit www.creativecastles.co.za.

DOMESTIC WORKERS

My domestic worker Maggie is looking for work on Tuesdays and Thursdays. She is a hard worker and has been working in the estate for many years. Please contact her on 072 224 6112. For a reference, call Reshma on 072 377 6576.

My domestic worker, Munorwei Dube, seeks employment for Mondays, Wednesdays and Fridays. She is extremely hardworking and thorough. She is eager to work, and a pleasant and kind person to have in your home. The best domestic I have ever had. Please call her on 076 187 4758.

Johannah has worked for us for almost 12 years now. She is a quiet, hard worker and is very good with dogs and with children (especially little ones). She is reliable, honest and trustworthy, and keeps our place spotless. She is now available 2 or 3 days a week. Please don't hesitate to contact me on 083 418 0373, or Johannah directly on 083 535-8092.

Lidia Kekana, our Domestic Worker, is hoping to find an additional two days of work in the estate. Call her on 072 597 1122.

Puleng has been working for us for over 4 years. She is quiet, and reliable. She is looking for work on Tuesdays, Wednesdays and Saturdays. You can call her at 079 933 3106.

Seeking any work please. Please call Refilwe Lehlokwe on 076 647 4105.

We are relocating and therefore we are looking for a job for our domestic of 9 years, Edline. She is available 3 days per week, either live in or living elsewhere. She is a very hard worker, 100% reliable, and irons perfectly. You can contact me (Janine) on 082 562 8450, or Edline directly on 078 000 3647.

GARDENER

Andrew Kwalila is beskikbaar Woensdae, Donderdae en Vrydae. Hy werk al die afgelope 5 jaar vir ons. Hy is baie betroubaar en verdien om in diens geneem te word. Enige persoon wat hom in diens wil neem kan my gerus kontak vir 'n verwysing. Bel my, Gerhard op 071 688 9799.

Career Decisions at a time like this!?!

Take the panic out of your decisions and allow H&H Consulting to guide your path



The range of institutions and study paths is endless and can be overwhelming. We strive to help learners understand the study opportunities offered by tertiary institutions.

Contact H&H Consulting
helo@hhconsult.co.za
076 390 9578
www.hhconsult.co.za



Corneli Oosthuizen

OPVOEDKUNDIGE SIELKUNDIGE
EDUCATIONAL PSYCHOLOGIST

Educational Psychologist with special interest in trauma, anxiety and depression and how it manifests in different aspects of our lives. Uses an eclectic approach tailored to each individual.

Assessments:

School Readiness, Psycho-Educational, Socio-Emotional, Subject Choice, Career

Therapy:

Individual Psychotherapy, Family Therapy, Play Therapy, Hypnotherapy



Corneli Oosthuizen
OPVOEDKUNDIGE SIELKUNDIGE
EDUCATIONAL PSYCHOLOGIST

HPCSA Reg no: PS0137243 /
Practice no: 0860030713694

082 920 6917

info@cornelioosthuizen.co.za

www.cornelioosthuizen.co.za

Therapy Rooms 571,
Aberdeen Street, Elarduspark



ACCREDITED ESTATE AGENTS

apple
PROPERTY
CONNECTION

Your Real Estate Agent

Melanie Burrell
082 653 5568
melanie@appleproperty.co.za
www.appleproperty.co.za

BuySell
THE REAL ESTATE COLLECTION

Principal: Nina Antoniou
Agent: Nina Antoniou Cell: 082 963 1994
Rental Agent: Eunice Cell: 071 676 5940
Office: 012 667 3692
Fax: 086 617 0516

LÉANE GRAAFF
PROPERTY SPECIALIST

SALES • RENTALS
VALUATIONS • FINANCE

083 457 3184

leapfrog
PROPERTY GROUP

Steven Kruger
082 699 4881
steven.kruger@leapfrog.co.za

PAM GOLDING
PROPERTIES

Principal: Retha Schutte
Office: 012 644 8300
Agent: Peter Varrie
Cell: 082 457 7416
peter.varrie@pamgolding.co.za

RealNet
Ultimate properties

Independently owned and operated franchise

Marius Minnie
083 640 2222
mariusm@realnet.co.za
www.realnet-ultimate.co.za
www.realnet.co.za

RM REALTORS
SALES RENTALS COMMERCIAL DEVELOPMENT

Machelle Henning-Walker
OWNER / PRINCIPAL
Cell: 082 789 7888
machelle@rmrealtors.co.za
www.rmrealtors.co.za

Seeff
Expertise Built Through Generations of Trust

Principal: S.J. van Wyk • 082 454 9813
Elaine Haupt • elaine.haupt@seeff.com • 083 757 6377
Michelle Nieuwoudt • michelle.nieuwoudt@seeff.com • 083 757 6377
Office: 012 667 2167 • Fax: 012 667 3566 • www.Seeff.com

SUPERIOR REALTY

Jonathan Koen
Cell: 073 206 3877
www.superiorrealty.co.za
jonathan@superiorrealty.co.za

**PLEASE
SUPPORT
OUR
APPROVED
ESTATE
AGENTS**

DENTAL
BOUTIQUE

SPECIALIZED DENTISTRY
FAMILY DENTISTRY
ORTHODONTICS

Centurion Gate Centre
012 6633 590
info@centuriondentist.co.za
www.dentalboutique.co.za

Collen
HANDYMAN

24HR FIX-IT SERVICES FOR
EMERGENCIES TO RESIDENTS IN
PRETORIA, CENTURION AND
SURROUNDING SUBURBS

MAINTENANCE
SERVICES

PAINTING
REPAIRS
MAINTENANCE
PLUMBING
PAVING
ELECTRICAL
INSTALLATION

CALL US TODAY!
071 286 8806

IMPORTANT NUMBERS

Police Emergency	10111
Lyttelton Police Station	012 644 8600
Pierre van Ryneveld Community Policing Forum	079 528 1630
Fire Emergency	10177
Medical Emergency	082 911
Security at Gates	012 662 3505 ext 3
Protea Coin Shift Manager	082 838 7779
Irene Farm Controller	082 947 7610
Irene Farm Villages:	
Estate Office	012 662 3505
Estate Manager	079 525 9281
Assistant Estate Manager	083 274 8829
Managing Agent: Account Ability	
• Tel: 082 780 0059 • Fax: 086 671 9798 • info@aams.co.za	

IRENE SERVICE PROVIDERS



MEDICAL SERVICES

BLOOD HEALTH & ACU THERAPY

100% NATURAL HEALING FOR HEALTH & LONGEVITY. Nutritional microscopy, kinesiology, comra and ozone therapy plus various detox methods. For appointments call 083 612 0427 or email: info@livebloodacupressure.co.za

DENTAL CARE

Irene Village Care, general dentistry and more. Irene Corporate Corner. Call: 012 662 0302 / 079 069 4607 info@irenecare.co.za www.irenecaredentist.co.za

DR CHRISTA ROCHER

Your GP in Irene Village Mall. Family health, child health, women's health. Call: 012 662 0305 Info@christacare.co.za www.christacare.co.za

TRANSPORT SERVICES

COLETTE DIRKS AIRPORT SHUTTLE SERVICE AND TRANSPORT TO AND FROM ST ALBAN'S COLLEGE.

Bus leaves from main gate at 06h30. Pick up from St Alban's in the afternoon. Contact Colette at 082 415 3830.

FINANCIAL SERVICES

FINANCIAL PLANNING

Professional advice on all personal and business-related insurance needs. **Personal:** Medical Aid, Funeral, Life Cover, Short Term Insurance, Investments. **Business:** Group Benefits, Company Agreements, Business Contingency, Commercial Insurance. Contact us: riaan@netactive.co.za / hilda.muller@netactive.co.za 084 653 6299 / 083 653 6299 / 012 348 1239. Office hours: 08h00 – 16h00.

GENERAL SERVICES

BRAAI WOOD FOR SALE

Best quality "sekelbos" wood at a reduced price of R 19.99 per bag. We supply and deliver to your home in Irene Farm Villages. Just phone Cobus on 072 606 2053 to arrange your order. *Nou gaan ons BRAAI !!!*

LILLIPUT EARLY LEARNING

Let your child fulfil their potential in a friendly, spacious environment. Safely situated within Cornwall Hill Country Estate. Small classes ensure individualised attention. Bilingual, 18 months – 4 years of age. Please contact Suzette: 083 564 3298 or lilliputearlylearning@gmail.com

LITTLE EINSTEINS PLAYSCHOOL

- ★ Established in 2003
- ★ Cornwall Hill Estate
- ★ Ages: 2-6 years
- ★ Phenomenal Grade 0 year
- ★ Highly qualified Educators
- ★ Small group teaching
- ★ Contact: Sharon Rosema 082 904 8157

PHOTOGRAPHY

LOOKING FOR A PHOTOGRAPHER?

See my portfolio here at www.ivanmullerphotography.com. If you like what you see, contact Ivan at 082 454 8487 or ivanmuller@icon.co.za. I have a large format photo quality inkjet printer that can print on canvas and fine art paper up to size A0. I am also available for any type of location photography.

HOME SERVICES, BUILDING & MAINTENANCE

ALTOKLEEN (1979)

Supervised quality cleaning and pest control 072 349 8787 / 082 395 6449 open Mondays – Saturdays and Festive Season. Carpets, loose rugs, upholstery, leather, windows, spring cleaning. Info@altokleen.co.za Pretoria, Centurion, Midrand

BOTSELO'S CURTAIN BOUTIQUE

We offer a professional service from Blinds and Curtains to rods, shutters, wallpaper, etc. With a wide variety of fabrics and styles available, we will find the perfect colour, style and design to meet your specific needs. Come visit our showroom or contact us to experience the full spectrum of services on offer. All your decorating needs under one roof, from consultation to installation. 012 663 8091. Email: botselos@botselos.co.za.

CHEMDRY

Convenient appointments, deep cleaning of carpets & upholstery. Chantel 012 663 8531 / 082 372 4999.

ELECTRICAL INSTALLATION SERVICES (EIS)

EIS is a BBBEE compliant company, established in 1997. We are a full service electrical contracting company, with over 20 years' experience in the electrical industry. We do COC's, All Electrical Maintenance and Construction, Specialised Lighting, Air Conditioning, Solar PV Installations. Tel: 012 662 0787 • Fax: 086 541 0685 Cell: 079 503 0944 • Email: estelle@e-i-s.co.za Website: www.eiselectrical.co.za

KJL WOOD & ALU

Wooden doors, window frames and decking Maintenance and restoration as well as new installations: Doors, window frames, pergolas, decks (wood and composite decking). General installations and custom joinery. Please contact Kobus Langeveldt: 074 615 8579 or kobuslange@yahoo.com

HOME SERVICES, BUILDING & MAINTENANCE

MAHANRU WINDOW CLEANING SERVICES

Eco friendly. We clean windows with purified water through a waterfed pole system. Residential homes and office blocks up to 3 storeys. We also clean solar panels, canopies, awnings and skylights. Contact Ruan 081 530 3807 or Magda 065 873 6338.

0861NUTSMAN

Renovation & Maintenance Specialists in Waterproofing, Maintenance, Welding, Carpentry, Electrical, Plumbing, Building, Painting, Security, Roofing. Contact Tobie 082 366 6911 for a free quotation.

PLUMBING – PLUMB AVID

Drains, leaks, maintenance, installations. 012 654 2513.

LIFESTYLE HOME GARDEN

Indigenous and exotic plants, home décor and restaurants. 011 792 5616.

MADISON FLOWERS

Fresh floral arrangements. 012 667 1802 / 082 873 3797.

GARDENING AND LANDSCAPING

MELIA GARDENS

Would you like to have a beautiful garden? Our professional, reliable garden service company can assist you. We have over 16 years' experience and also offer pool maintenance services. Contact us for a quotation and see how we can maintain your garden and make it flourish! Amelia 083 326 4210. E-mail: gardenlady@mweb.co.za

MONAVONI NURSERY

Landscaping, irrigation, nursery. 012 668 1261.

RESTAURANTS

MEADOW GREEN RESTAURANT

012 667 6464.

ARRIE NEL IRENE PHARMACY WELCOMES YOU TO OUR FAMILY

We at Arrie Nel Irene Pharmacy strive to always provide you with the best service. You can expect to receive good-quality care that will help you to improve your health and well-being.

Arrie Nel Irene is a Pharmacy where you will be met with a smile, receive expert advice regarding your medication usage, interactions, side effects etc. We have a reduced waiting time, which allows you to receive fast and efficient services.

Our responsible pharmacist, Lilanie Joubert, will ensure excellent and sustainable patient-centred pharmaceutical care. She is passionate about medicine and how she can apply her knowledge and skills to improve patient outcomes. She is a caring pharmacist who wants to make a positive difference.

She is assisted by Justin Butler, who is compassionate and loves to help people. He is an all-rounder who knows the pharmacy by heart and is quick to solve any problem.

Our Clinic sister, Sarah Havemann, is able to assist you with injections, vaccinations, administering medicines and setting IV's. She is kind and warm hearted, and will make you feel at ease during your clinic consultation. Sister Havemann is here to meet all your clinic needs, from blood glucose and cholesterol tests to wound dressing.

Make use of our FREE DELIVERY SERVICE, where Piet van der Pas will deliver your medication safely and securely to your home.

We, as a pharmacy, welcome you with open hearts, big smiles and a caring attitude. We can't wait for you to be part of our family.



Visit our friendly pharmacy today!

Monday – Friday: 9H00 – 17H30 Saturday: 9h00 – 14h00 Sunday: Closed Public Holiday: 10h00 – 13h00



**ARRIE NEL
PHARMACY GROUP**

IRENE PHARMACY

Family values, value for the whole family!
Shop 3, Morgenster Building, Main Road, Irene

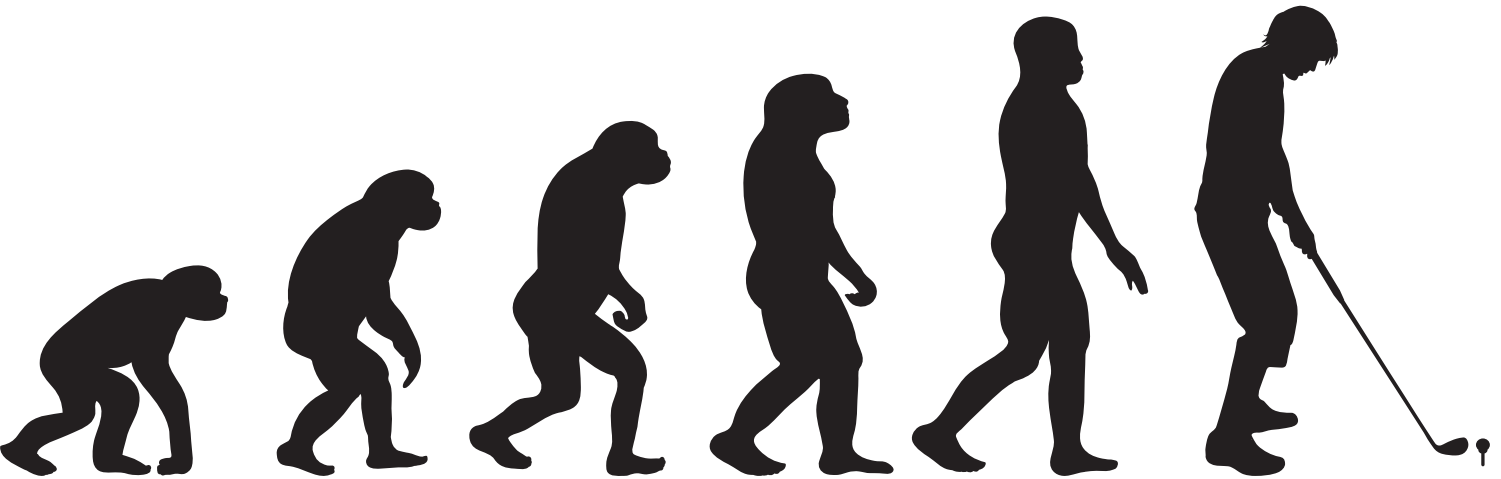
Phone: (012) 667 5655 or (012) 667 6167
Whatsapp: 066 509 8351 or 076 631 8590
Email: irene@arrienel.co.za

PRIMARY HEALTH CARE + CLINIC + FREE DELIVERY



THE OLDEST GAME ON EARTH

BY JAMES CLARKE



Golf is an exceptionally ancient game. It goes back well before Gary Player. In fact, it goes back to the time of the knuckle-dragging man-apes.

Three or four million years ago our ancestors were forced out of Africa's receding forests and on to the plains. To see over the top of the grass they were compelled to stand upright - the first step towards being able to play golf.

Their only weapon in this new landscape which, as one can imagine, was picked over by some pretty mean creatures, was a club. A club: the second step had been achieved.

One day a man-ape, Ug Blainkenthorpe (not his real name) picked up a stick intending to use it as a club for hitting small mammals and people he didn't like. However, it was too whippy for hunting. But he liked the stick and he pondered over it for some time before an idea struck him.

He used it to hit small, round, white stones. He watched in fascination as the stones flew off into the distance.

Then he and his friend, Og Willisden, (as an historian I must warn some authorities say his name was spelled Willisdon), spent many hours hunting for these beautiful pebbles and, being hunters, they enjoyed this immensely.

"Hey this is fun," said Og. "But how

about a game in which teams kick a big leather ball. We could call it soccer?"

"It'll never catch on," said Ug.

And so a kind of game was born. It was, at first, no more than 'hunt-the-stone' and it sometimes entailed flattening the veld by flogging the eye-level grass using these funny sticks. The game became known as 'flog'.

If, of course, a stone went down a hole, then quite often, there it had to stay. The floggers soon realised they needed lots of little white stones. This now became the job of the women because, after all, collecting little white stones was, strictly-speaking, 'gathering' and, therefore, in this hunter-gatherer society it fell into the women's department.

One day Og said to Ug, "Maybe it will be more fun if we deliberately aim for holes to see who can sink their stone in the least number of strokes."

Flog, when all is considered, has not improved much beyond this although cutting the grass was a useful step.

Sports historians - ignorant of the foregoing - generally believe that it was the Scots who invented the game around the 1300s. That is what is written in some history books.

Certainly, the Scots turned the game around by using balls made of skin and twine, which were softer, and aiming for

holes somewhat smaller than warthog burrows. They also turned the name around - 'flog' was spelt backwards to become 'golf'. It's amazing how few people know this.

From here on the history of the game is more accurately documented. *Encyclopaedia Britannica* says that by the mid-1400s James II decreed that "Golfe be utterly cried down" because it was rivalling archery as an outdoor pastime and archery was necessary for the defence of the realm.

Some say the game originated in Holland or Belgium and grew out of the game of *chole*. *Chole* was a cross-country game in which opposing sides set off to hit their ball across many kilometres to a target such as a church door. After one side had played three strokes the other side had the right to hit their opponents' ball into the nearest hazard - even over a cliff.

This, today, could result in temper tantrums.

It might be significant that the Scots bought their balls from Holland until James II curbed the trade because 'no small quantity' of gold and silver was being spent on their purchase.



I gave up golf many years ago after the primeval thrill of hunting for balls grew thin.

PATIO WAREHOUSE



Africa's Largest Selection of Patio Furniture & Accessories



We are located in Centurion at the N1 Samrand off-ramp
www.patiowarehouse.co.za | Centurion: 012 657 9400  



Leaders in Sleep Technology and Innovation.

- **97% International satisfaction rate.**
- **Recognised and recommended by professionals world-wide.**
- **Personalised sleep solution.**

- **JOHANNESBURG:** Clearwater Shopping Centre | Design Quarter Kramerville | Hyde Park Corner | Bedfordview Shopping Centre
- **PRETORIA:** Brooklyn Mall | Menlyn Shopping Centre
- **WESTERN CAPE:** Canal Walk Shopping Centre | De Waterkant Media Quarter | Table Bay Mall • **KZN:** The Crescent at Umhlanga Ridge



www.vencasa.co.za | 0861 60 60 60